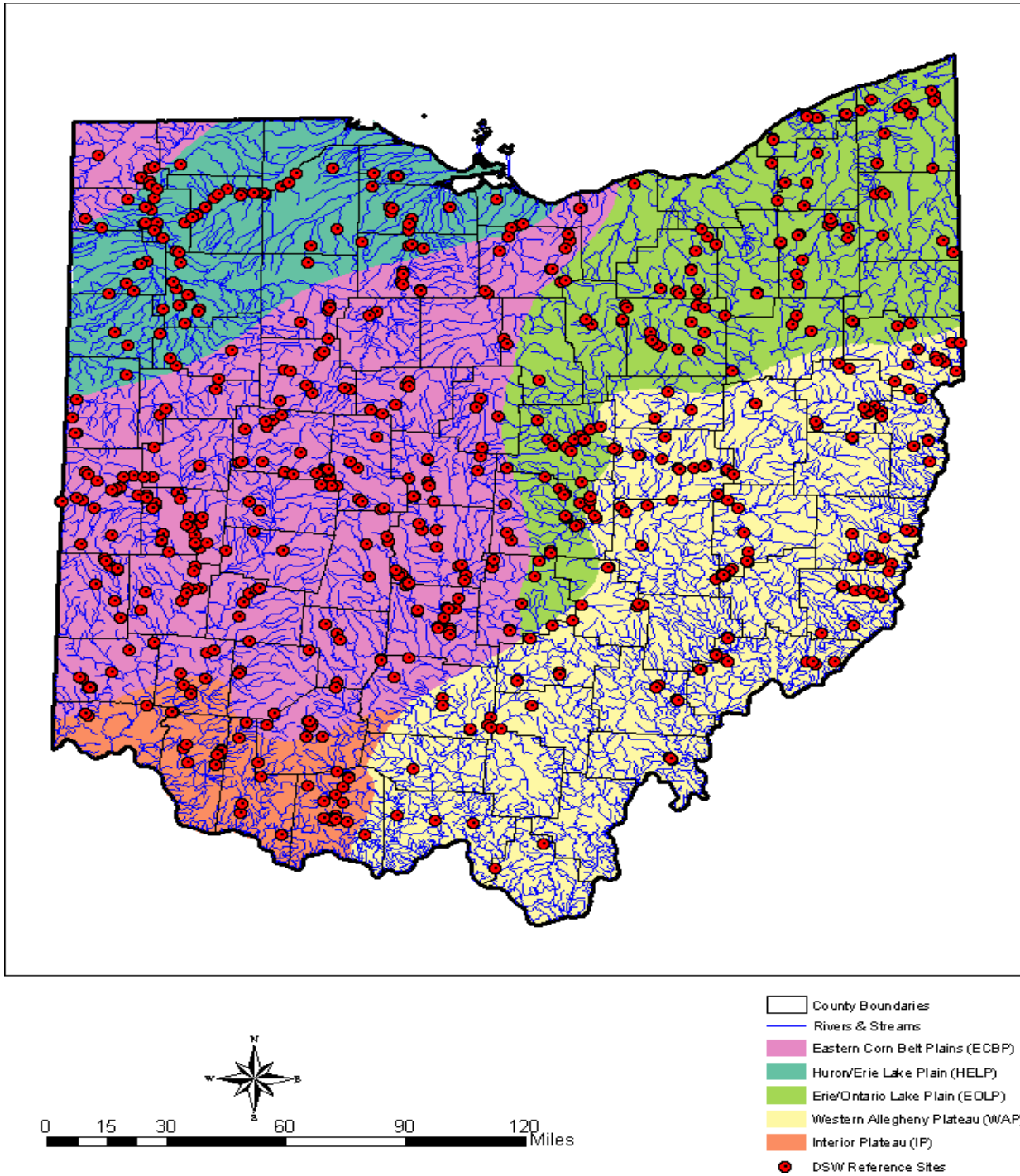


[Comment: For dates of non-regulatory government publications, publications of recognized organizations and associations, federal rules, and federal statutory provisions referenced in this appendix, see rule 3745-300-15 of the Administrative Code titled "Incorporation by reference - voluntary action program."]

In this appendix, mg/kg means milligrams per kilogram, NA means not applicable, and µg/kg means micrograms per kilogram.

Table I: Statewide and regional sediment reference values (mg/kg)

Table I Chemical of Concern	Chemical Abstract Service Number (CAS #)	Statewide	Ecoregions (a)				
			Eastern Corn Belt Plains (ECBP)	Huron-Erie Lake Plain (HELP)	Erie-Ontario Lake Plain (EOLP)	Interior Plateau (IP)	Western Allegheny Plateau (WAP)
Antimony	7440-36-0	NA	0.92	1.3	0.84	NA	NA
Arsenic	7440-38-2	NA	18	25	11	11	19
Barium	7440-39-3	NA	240	190	210	170	360
Beryllium	7440-41-7	0.8	NA	NA	NA	NA	NA
Cadmium	7440-43-9	NA	0.90	0.79	0.96	0.30	0.80
Chromium, Total	7440-47-3	NA	40	29	51	30	53
Cobalt	7440-48-4	12	NA	NA	NA	NA	NA
Copper	7440-50-8	NA	34	32	42	25	33
Lead	7439-92-1	47	NA	NA	NA	NA	NA
Manganese	7439-96-5	NA	780	1,500	1,000	1,400	3,000
Mercury	7439-97-6	0.12	NA	NA	NA	NA	NA
Nickel	7440-02-0	NA	42	33	36	33	61
Selenium	7782-49-2	NA	2.3	1.7	1.4	1.6	2.6
Silver	7440-22-4	0.43	NA	NA	NA	NA	NA
Thallium	7440-28-0	4.7	NA	NA	NA	NA	NA
Vanadium	7440-62-2	40	NA	NA	NA	NA	NA
Zinc	7440-66-6	NA	160	160	190	100	170



(a) Figure 1: Ohio Ecoregions including Division of Surface Water (DSW) Sampling Locations

Table II: Consensus-based threshold effect concentrations¹

Chemical of Concern	Chemical Abstract Service Number (CAS #)	Consensus-Based Threshold Effect Concentration
Metals (mg/kg dry weight)		
Arsenic	7440-38-2	9.8
Cadmium	7440-43-9	0.99
Chromium	7440-47-3	43
Copper	7440-50-8	32
Lead	7439-92-1	36
Mercury	7439-97-6	0.18
Nickel	7440-02-0	23
Zinc	7440-66-6	121
Polycyclic Aromatic Hydrocarbons (µg/kg dry weight)		
Anthracene	120-12-7	57
Benz[a]anthracene	56-55-3	110
Benzo[a]pyrene	50-32-8	150
Chrysene	218-01-9	170
Dibenz[a,h]anthracene	53-70-3	33
Fluoranthene	206-44-0	420
Fluorene	86-73-7	77
Naphthalene	91-20-3	180
Phenanthrene	85-01-8	200
Pyrene	129-00-0	200
Total PAHs	NA	1,600
Polychlorinated Biphenyls (µg/kg dry weight)		
Polychlorinated Biphenyls, Total	1336-36-3	60
Pesticides (µg/kg dry weight)		
Chlordane	57-74-9	3.2
DDD	72-54-8	4.9
DDE, p,p'-	72-55-9	3.2
DDT	50-29-3	4.2
DDTs, Total	NA	5.3
Dieldrin	60-57-1	1.9
Endrin	72-20-8	2.2
Heptachlor Epoxide	1024-57-3	2.5
Hexachlorocyclohexane, Gamma- (Lindane)	58-89-9	2.4

¹ Consensus-based threshold concentrations from MacDonald, Ingersoll and Berger's "Development and Evaluation of Consensus-based Sediment Quality Guidelines for Freshwater Ecosystems" are rounded to two significant digits.