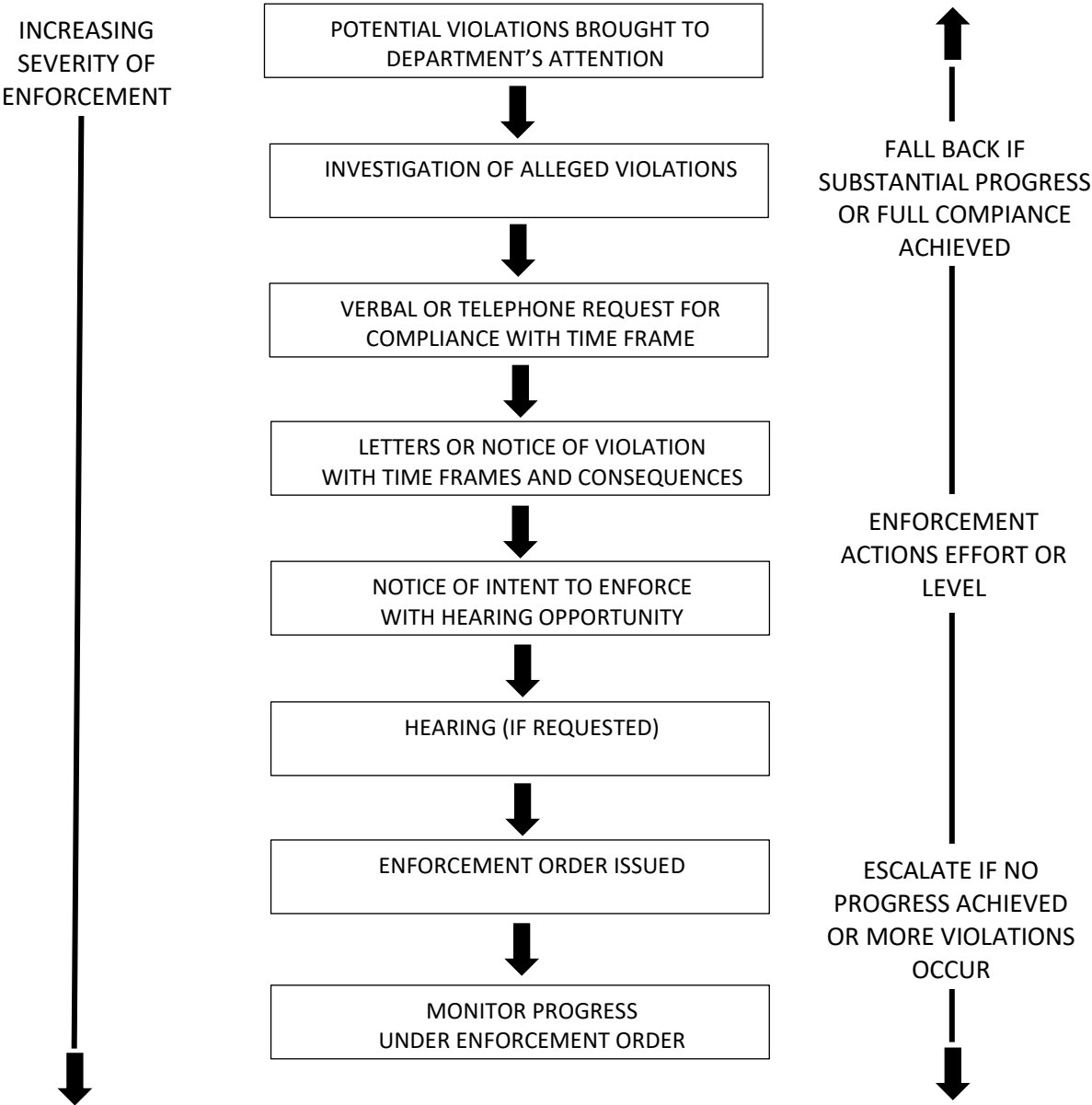


EXAMPLE OF WELL ENFORCEMENT PROCESS
(690-225-0020, 690-225-0030)

Table 225-2



It is desirable to achieve compliance at the lowest possible level of enforcement. Escalation of enforcement can be expected if compliance does not result at the next lower level. Reduction of enforcement effort can be expected if substantial progress toward compliance is achieved.