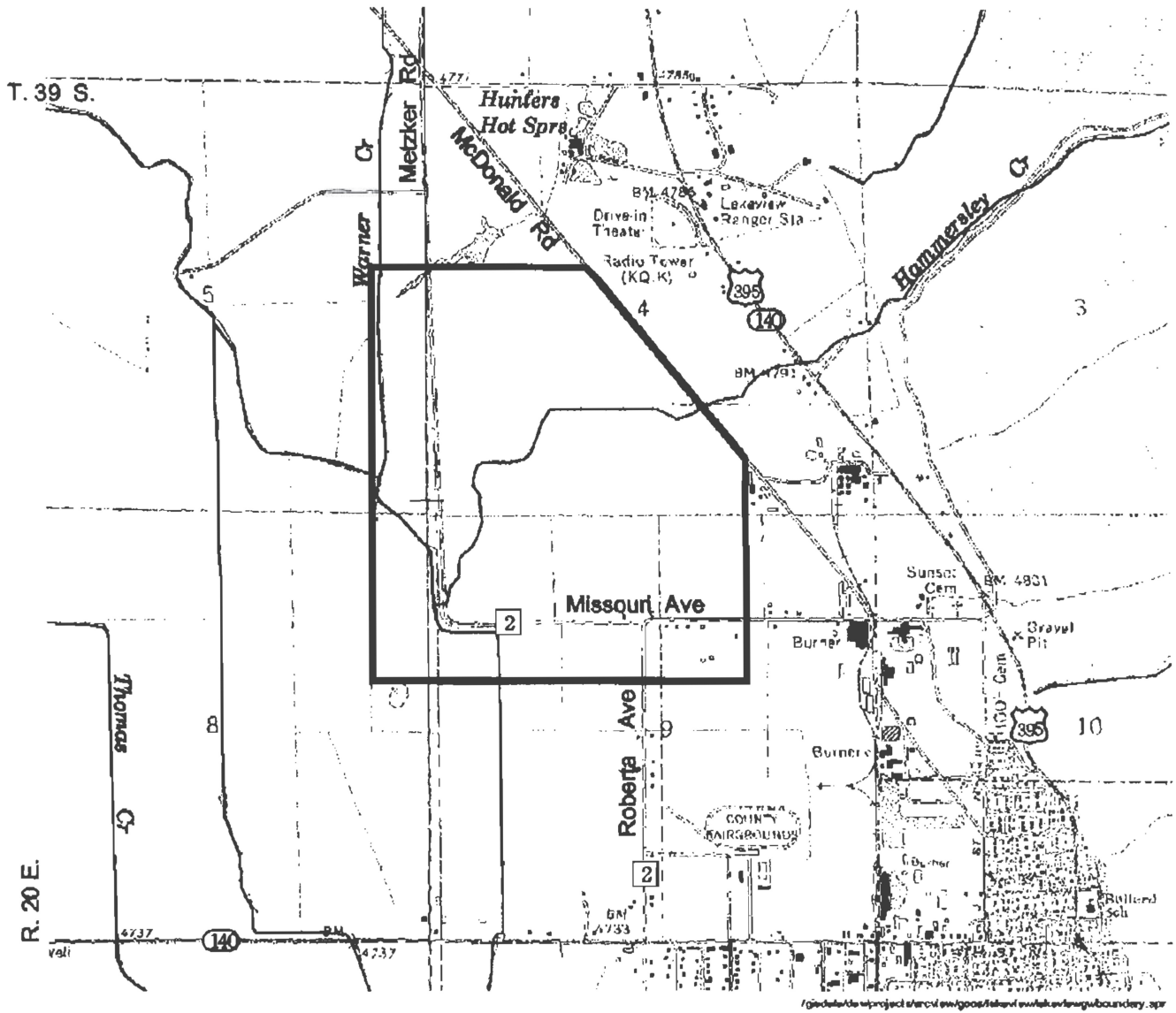
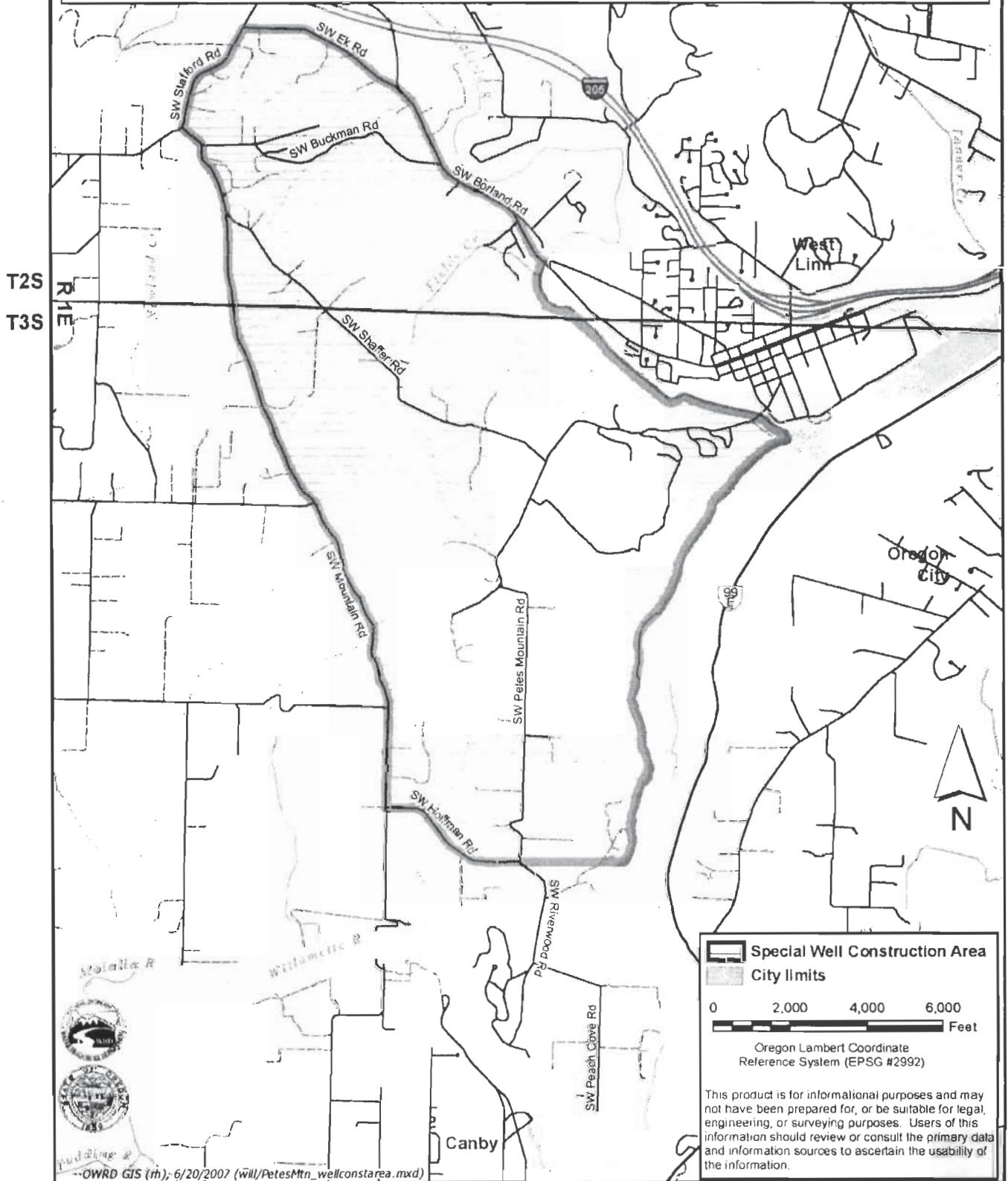


FIGURE 200-3

Special Area Standards
"Lakeview Area"
OAR 690-200-0028



Special Area Standards: Petes Mountain Area



T2S
T3S

R1E

Special Well Construction Area

City limits

0 2,000 4,000 6,000 Feet

Oregon Lambert Coordinate Reference System (EPSG #2992)

This product is for informational purposes and may not have been prepared for, or be suitable for legal, engineering, or surveying purposes. Users of this information should review or consult the primary data and information sources to ascertain the usability of the information.

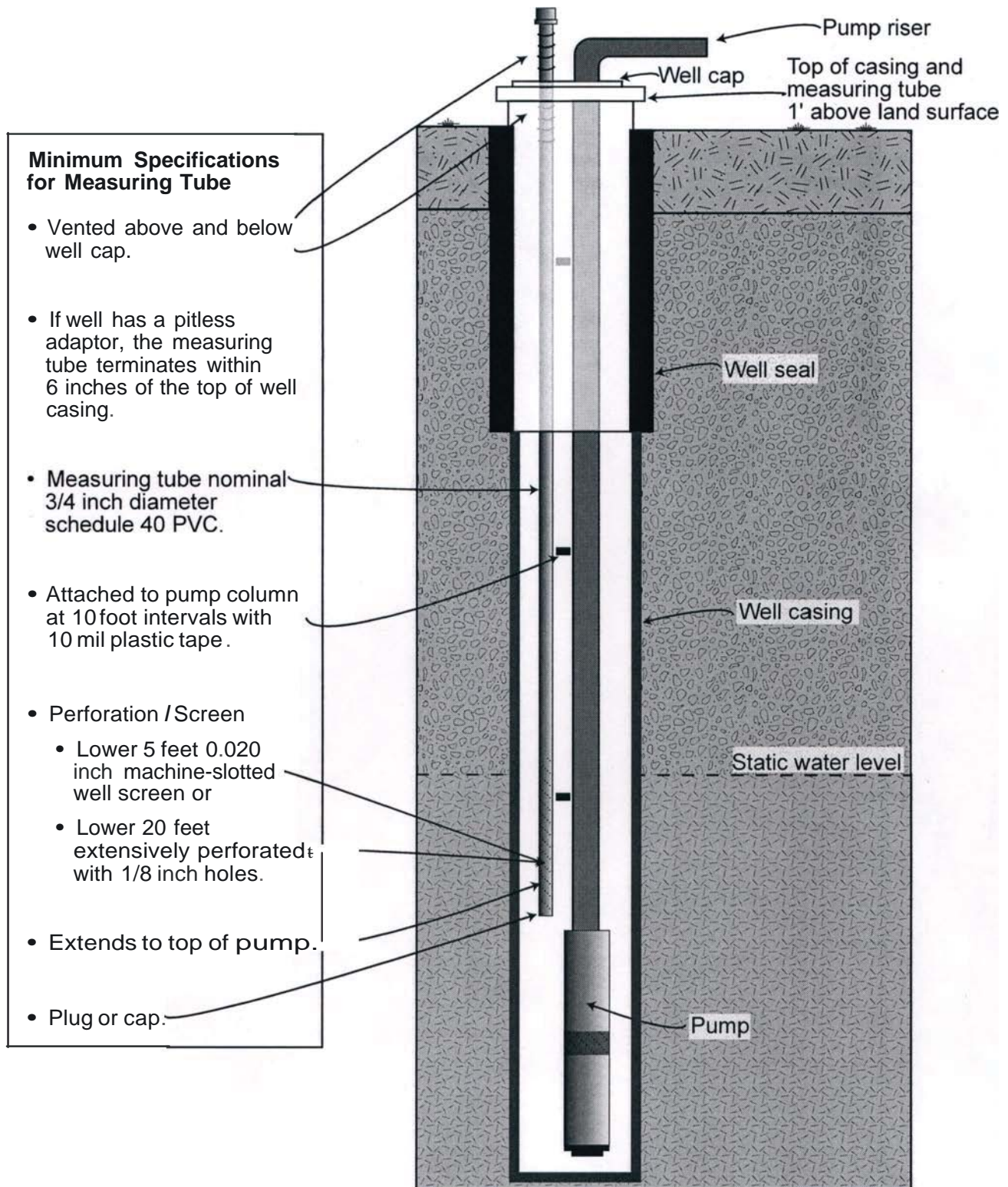
Metalla #

Willamette R

Canby

--OWRD GIS (m); 6/20/2007 (will/PetesMtn_wellconstarea.mxd)

Measuring Tube Diagram and Specifications

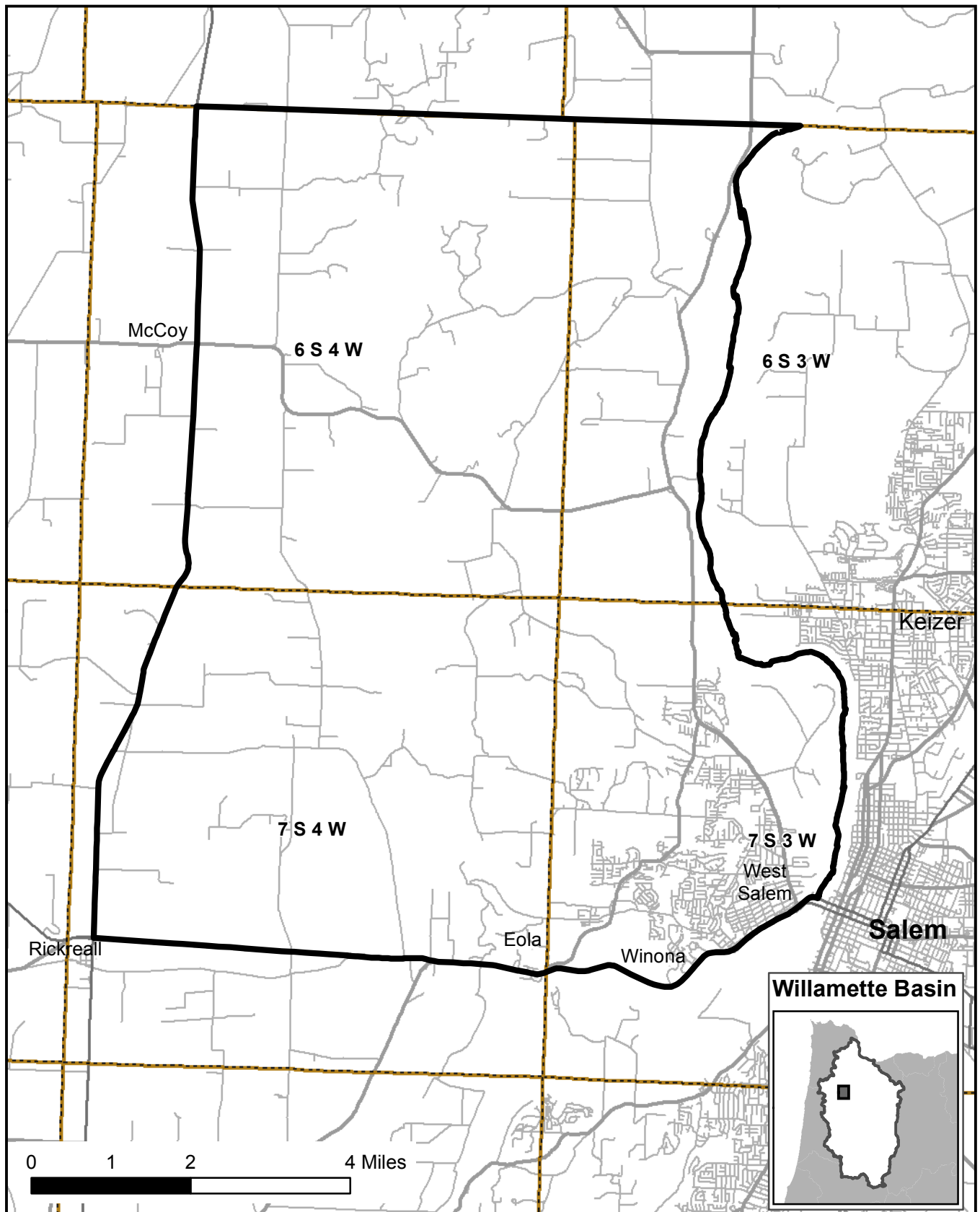


This diagram details the minimum standards for a dedicated measuring tube. A measuring tube may be constructed in a manner that exceeds these standards without prior Department approval. The dedicated measuring tube shall not be reduced in size over the length of the pipe and shall remain free from wires or any other obstruction.

Eola Hills Groundwater Limited Area

Special Area Standards

OAR 690-200-0028, 690-215-0201



OAR 690-200-0028
OAR 690-215-0201

SPECIAL AREA STANDARDS: MOSIER AREA

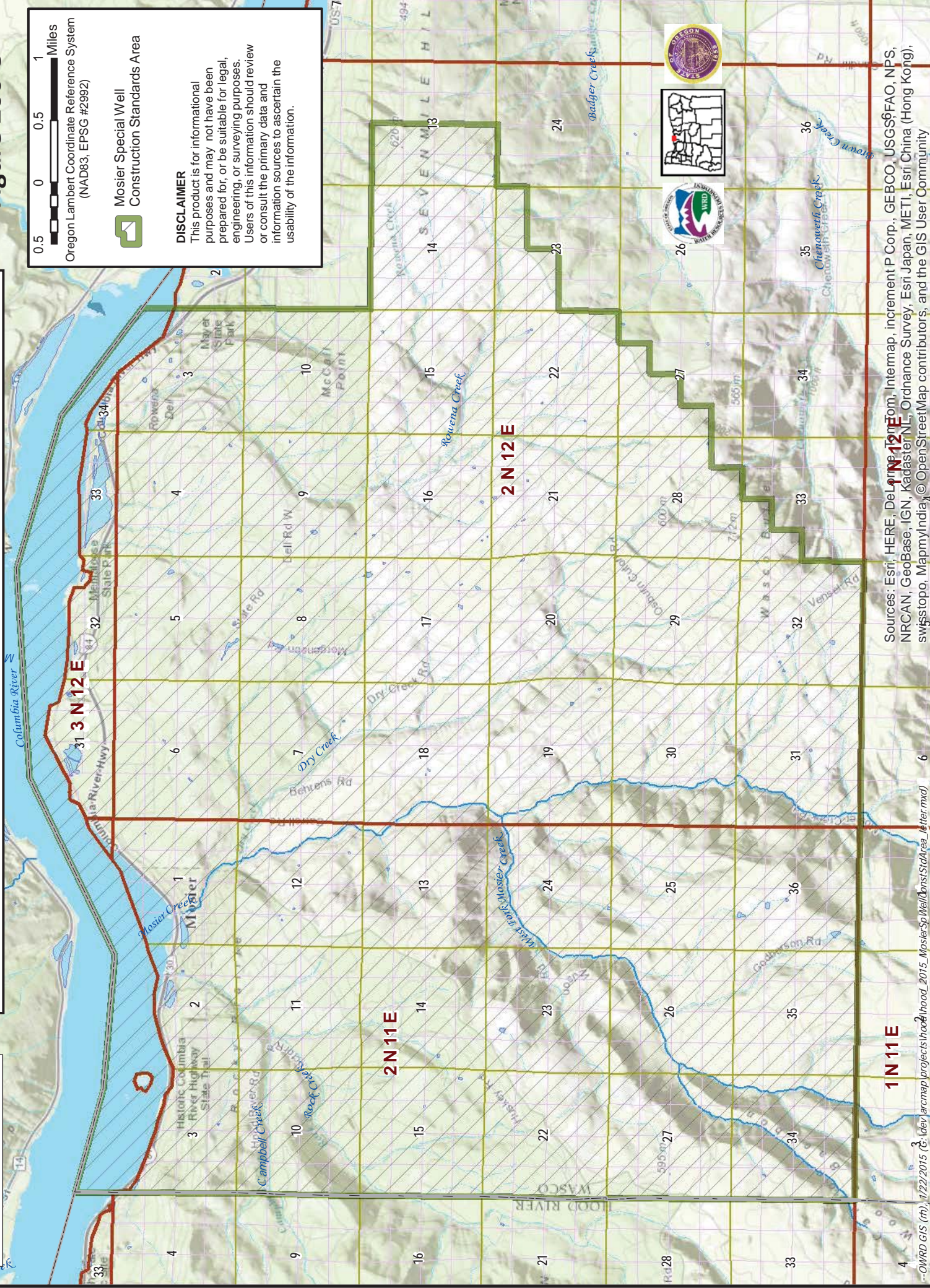
Figure 200-8

0.5 0 0.5 1 Miles
Oregon Lambert Coordinate Reference System
(NAD83, EPSG #2992)

 Mosier Special Well
Construction Standards Area

DISCLAIMER

This product is for informational purposes and may not have been prepared for, or be suitable for legal, engineering, or surveying purposes. Users of this information should review or consult the primary data and information sources to ascertain the usability of the information.



Sources: Esri, HERE, DeLorme, Intermap, increment P Corp., GEBCO, USGS/FAO, NPS, NRCAN, Geobase, IGN, Kadaster NL, Ordnance Survey, Esri Japan, METI, Esri China (Hong Kong), swisstopo, MapmyIndia, ©OpenStreetMap contributors, and the GIS User Community