

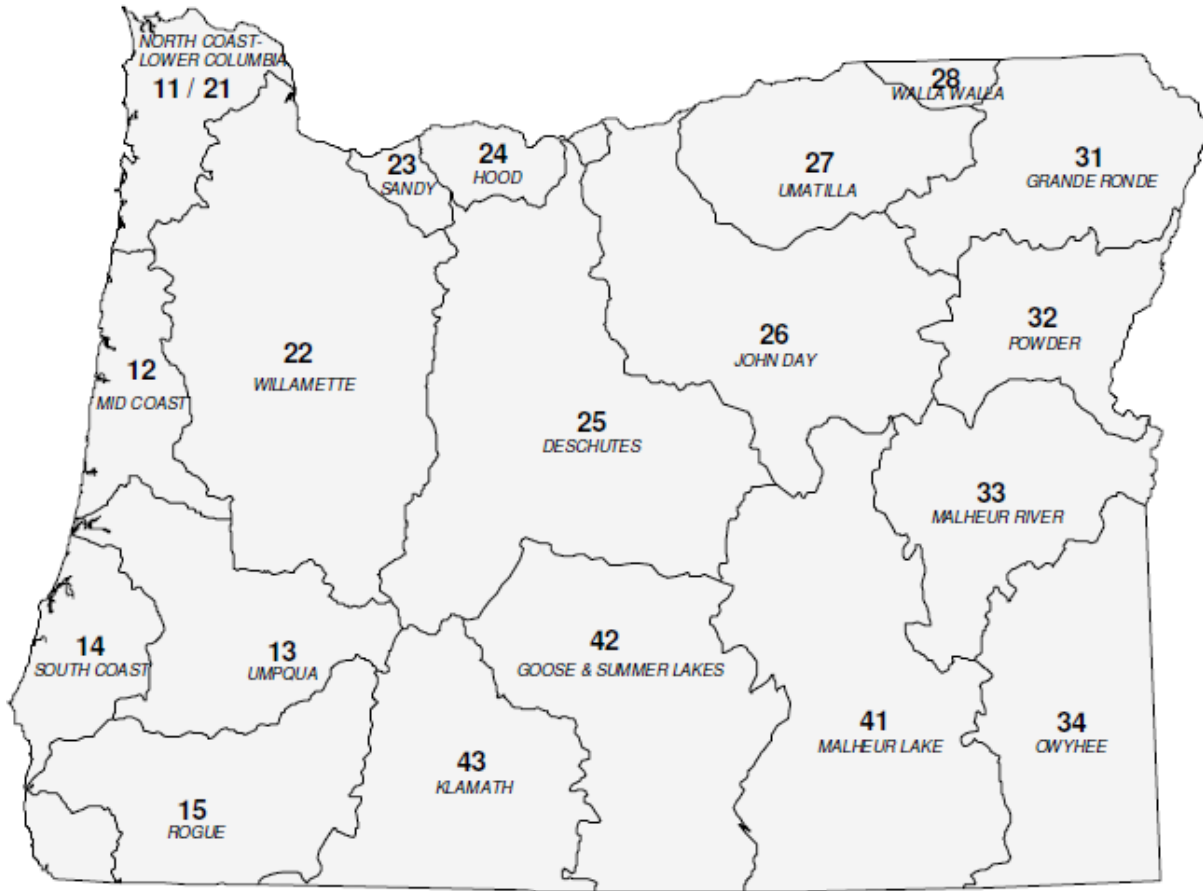


State of Oregon Department of Environmental Quality

# OAR 340-041-0340

## Tables and Figures

# Figure 1: Oregon Basin Index Map



Basin Name	Basin #	OAR #
DESCHUTES	25	340-041-0130
GOOSE & SUMMER LKS	42	340-041-0140
GRANDE RONDE	31	340-041-0151
HOOD	24	340-041-0160
JOHN DAY	26	340-041-0170
KLAMATH	43	340-041-0180
MALHEUR LAKE	41	340-041-0190
MALHEUR RIVER	33	340-041-0201
MD COAST	12	340-041-0220
NORTH COAST-LWR COL	11-21	340-041-0230
OWYHEE	34	340-041-0250
POWDER	32	340-041-0260
ROGUE	15	340-041-0271
SANDY	23	340-041-0286
SOUTH COAST	14	340-041-0300
UMATILLA	27	340-041-0310
UMPQUA	13	340-041-0320
WALLA WALLA	28	340-041-0330
WILLAMETTE	22	340-041-0340



# OAR 340-041-0340

## Table 340A

### Designated Beneficial Uses

#### Willamette Basin

Beneficial Uses	Willamette River Tributaries						Main Stem Willamette River			
	Clackamas River	Molalla River	Santiam River	McKenzie River	Tualatin River	All Other Streams & Tributaries	Mouth to Willamette Falls, Including Multnomah Channel	Willamette Falls to Newberg	Newberg to Salem	Salem to Coast Fork
Public Domestic Water Supply <sup>1</sup>	X	X	X	X	X	X	X	X	X	X
Private Domestic Water Supply <sup>1</sup>	X	X	X	X	X	X	X	X	X	X
Industrial Water Supply	X	X	X	X	X	X	X	X	X	X
Irrigation	X	X	X	X	X	X	X	X	X	X
Livestock Watering	X	X	X	X	X	X	X	X	X	X
Fish & Aquatic Life <sup>2</sup>	X	X	X	X	X	X	X	X	X	X
Wildlife & Hunting	X	X	X	X	X	X	X	X	X	X
Fishing	X	X	X	X	X	X	X	X	X	X
Boating	X	X	X	X	X	X	X	X	X	X
Water Contact Recreation	X	X	X	X	X	X	X <sup>3</sup>	X	X	X
Aesthetic Quality	X	X	X	X	X	X	X	X	X	X
Hydro Power	X	X	X	X	X	X	X	X		
Commercial Navigation & Transportation							X	X	X	

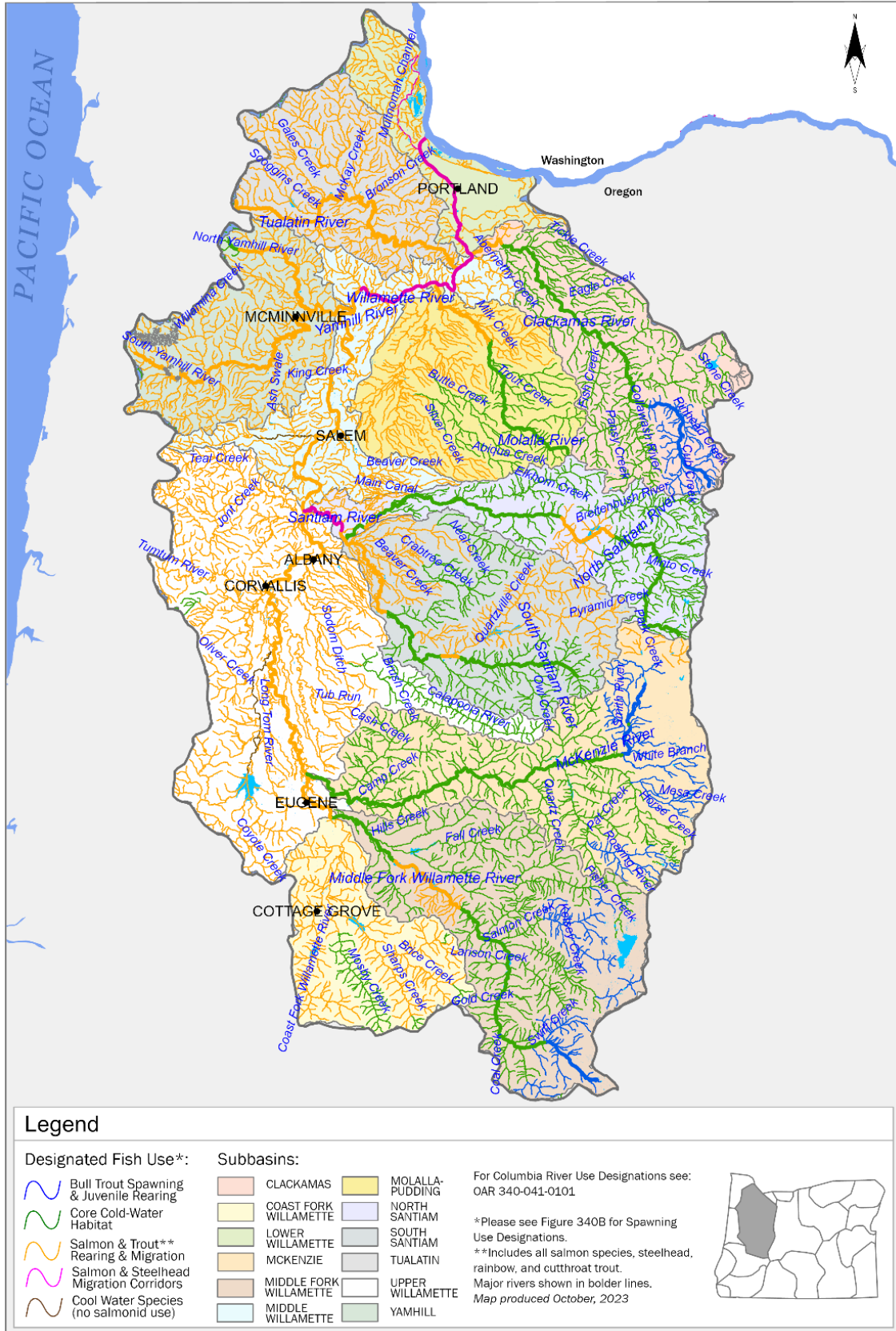
<sup>1</sup> With adequate pretreatment and natural quality that meets drinking water standards.  
<sup>2</sup> See also Figures 340A, 340B, 340C and 340D for fish use designations for this basin.  
<sup>3</sup> Not to conflict with commercial activities in Portland Harbor.



State of Oregon Department of Environmental Quality

# OAR 340-041-0340 – Figure 340A

## Year-Round Temperature Fish Use Designations Willamette Basin, Oregon





State of Oregon Department of Environmental Quality

# OAR 340-041-0340 – Figure 340B

## Seasonal Salmon and Steelhead Spawning Use Designations Willamette Basin, Oregon

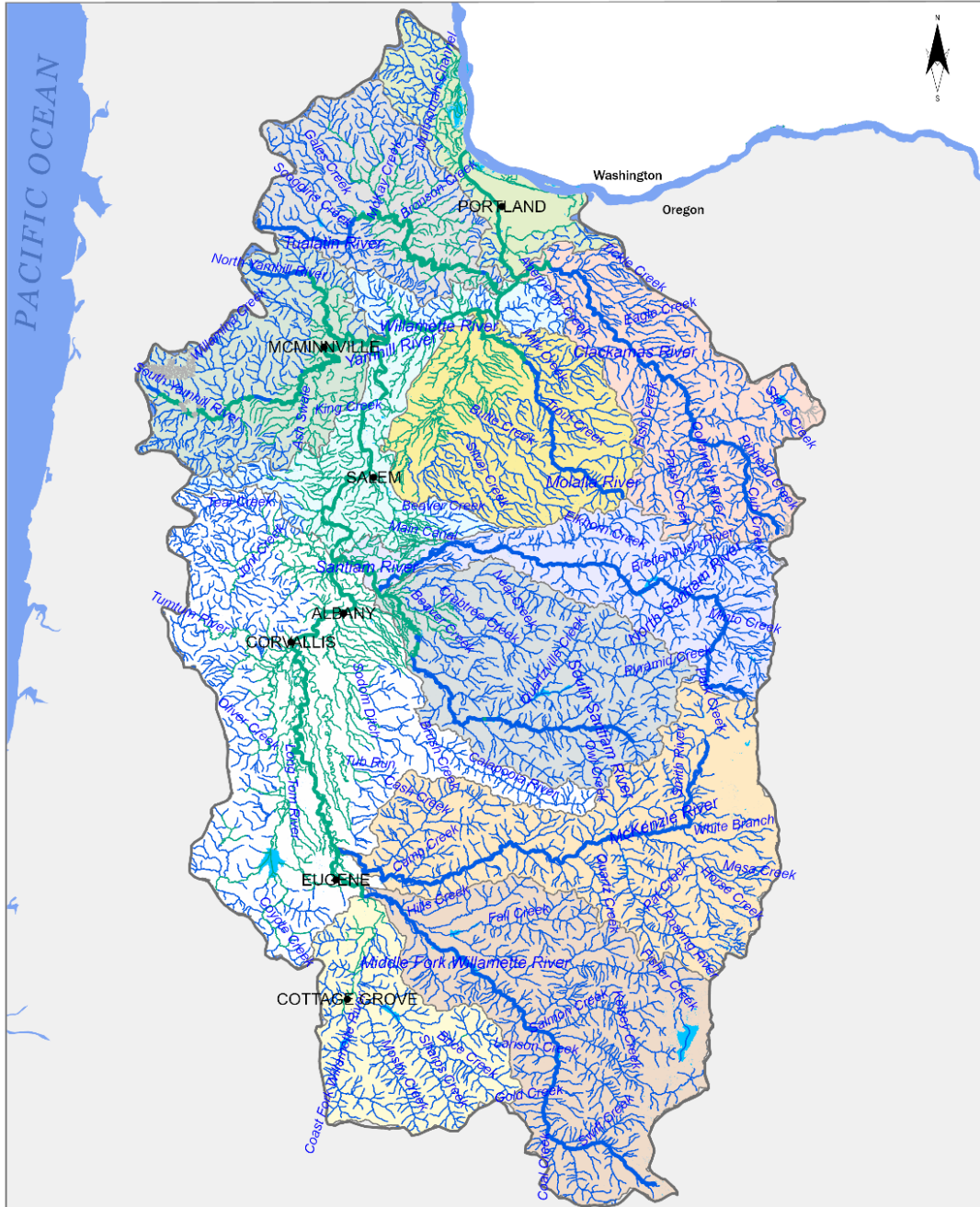




State of Oregon Department of Environmental Quality

# OAR 340-041-0340 – Figure 340C

## Year-Round Dissolved Oxygen Fish Use Designations Willamette Basin, Oregon



### Legend

Designated Fish Use\*:

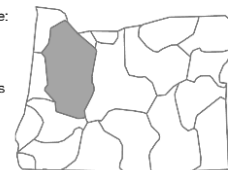
- Cold-Water Aquatic Life
- Cool-Water Aquatic Life
- Out of Jurisdiction / Not Designated

Subbasins:

- |                        |                  |
|------------------------|------------------|
| CLACKAMAS              | MOLALLA-PUDDING  |
| COAST FORK WILLAMETTE  | NORTH SANTIAM    |
| LOWER WILLAMETTE       | SOUTH SANTIAM    |
| MCKENZIE               | TUALATIN         |
| MIDDLE FORK WILLAMETTE | UPPER WILLAMETTE |
| MIDDLE WILLAMETTE      | YAMHILL          |

For Columbia River Use Designations see: OAR 340-041-0101

\*Please see Figure 340D for seasonal D.O salmonid spawning use designations. Major rivers shown in bolder lines.  
Map produced October, 2023

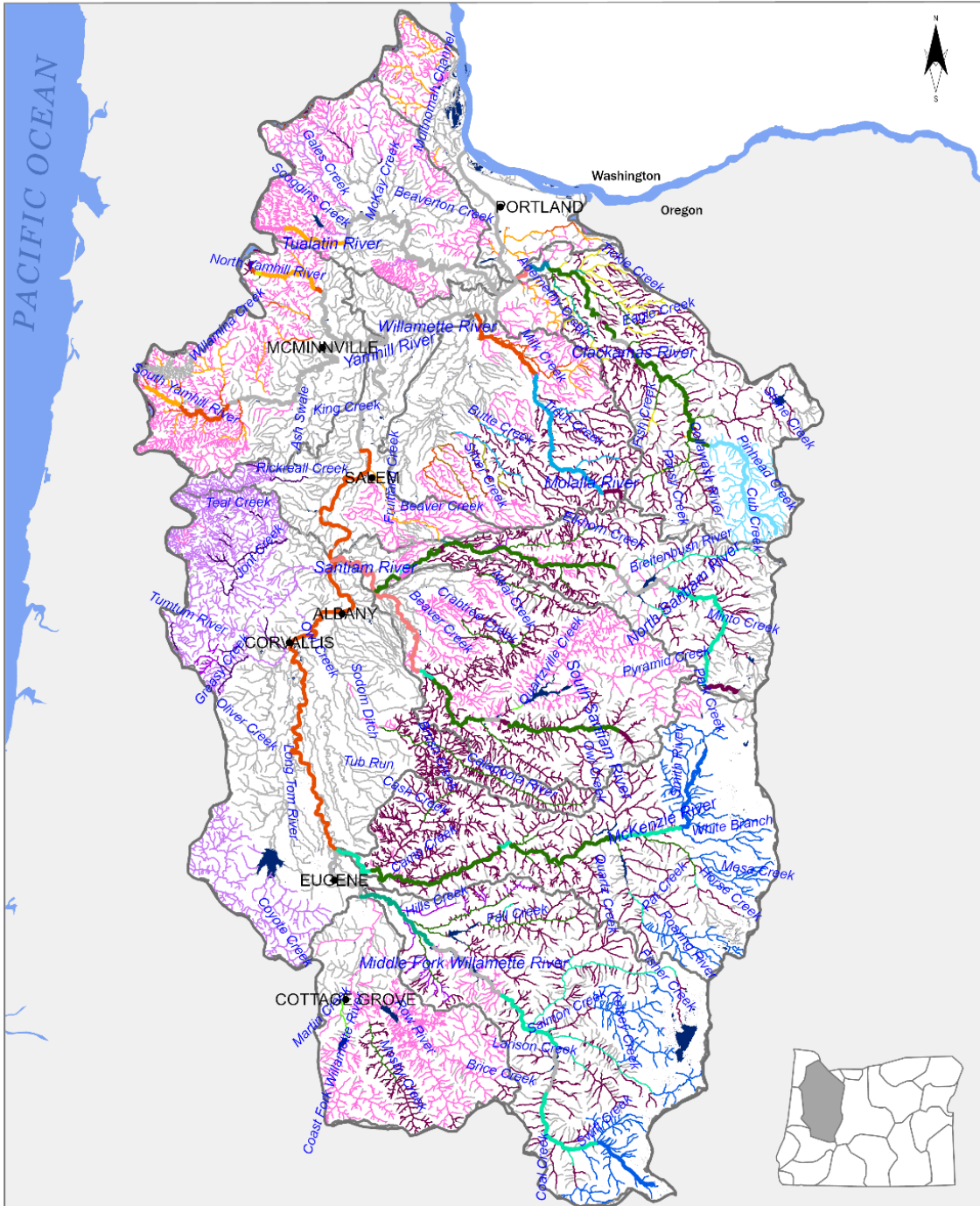




State of Oregon Department of Environmental Quality

# OAR 340-041-0340 – Figure 340D

## Seasonal Dissolved Oxygen Salmonid Spawning Use Designations Willamette Basin, Oregon



Designated Salmonid Spawning Use*:				For Columbia River Use Designations see: OAR 340-041-0101	
	August 15-May 15		September 1-June 15		October 1-June 15
	August 15-May 30		September 15-April 30		October 15-April 30
	August 15-June 15		September 15-May 15		October 15-May 15
	September 1-April 30		September 15-June 15		October 15-June 15
	September 1-May 15		October 1-April 30		November 1-April 30
			October 1-May 15		November 1-May 15
					November 1-June 15
					January 1-May 15
					January 1-June 15
					Out of Jurisdiction / Not Designated
					Subbasins

\* Salmonid spawning includes salmon, steelhead, trout, and Bull Trout/char. Please see Figure 340C for Year-Round D.O. Use Designations. Major rivers shown in bolder lines.  
Map produced October, 2023