

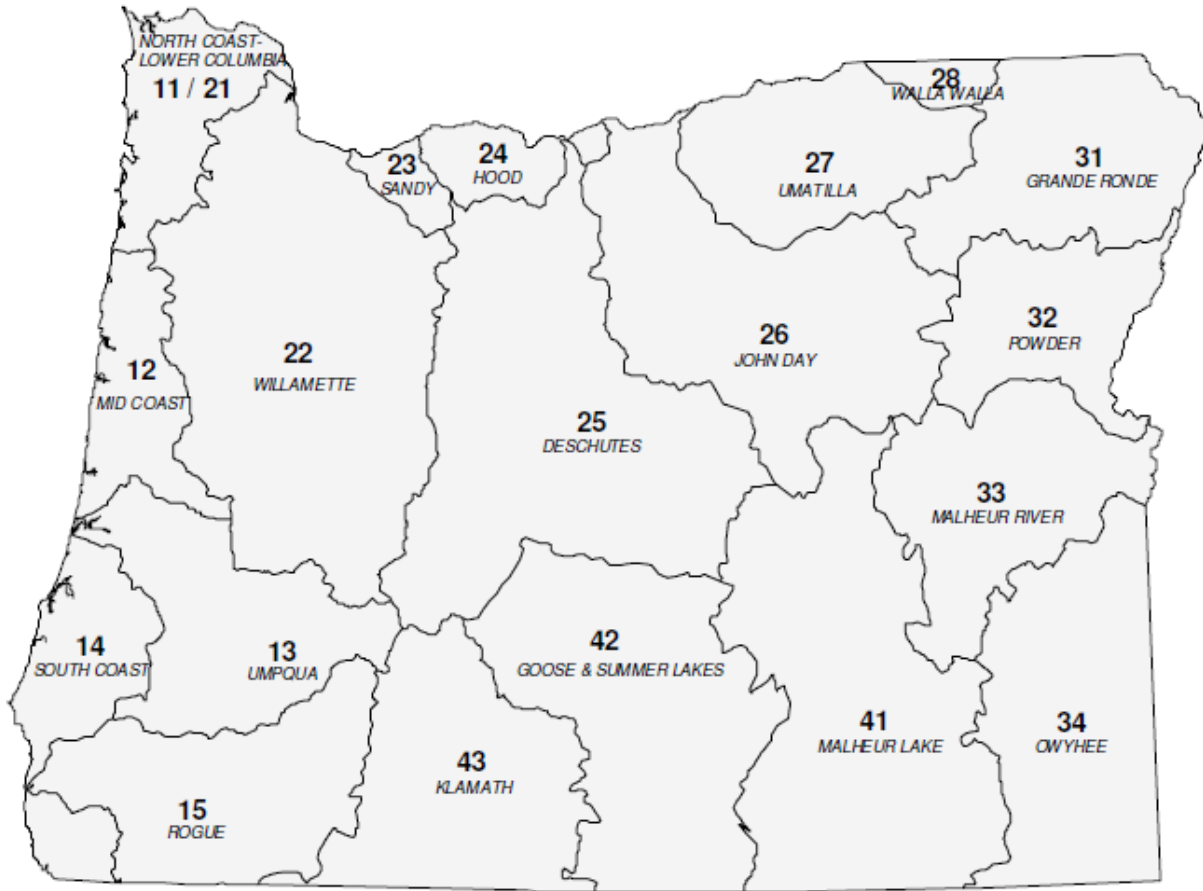


State of Oregon Department of Environmental Quality

OAR 340-041-0310

Tables and Figures

Figure 1: Oregon Basin Index Map



Basin Name	Basin #	OAR #
DESCHUTES	25	340-041-0130
GOOSE & SUMMER LKS	42	340-041-0140
GRANDE RONDE	31	340-041-0151
HOOD	24	340-041-0160
JOHN DAY	26	340-041-0170
KLAMATH	43	340-041-0180
MALHEUR LAKE	41	340-041-0190
MALHEUR RIVER	33	340-041-0201
MD COAST	12	340-041-0220
NORTH COAST-LWR COL	11-21	340-041-0230
OWYHEE	34	340-041-0250
POWDER	32	340-041-0260
ROGUE	15	340-041-0271
SANDY	23	340-041-0286
SOUTH COAST	14	340-041-0300
UMATILLA	27	340-041-0310
UMPQUA	13	340-041-0320
WALLA WALLA	28	340-041-0330
WILLAMETTE	22	340-041-0340



OAR 340-041-0310
Table 310A
Designated Beneficial Uses
Umatilla Basin

Beneficial Uses	Umatilla Subbasin	Willow Creek Subbasin	West Division Main Canal – constructed channel³	West Division Main Canal – overflow channels³
Public Domestic Water Supply ¹	X	X		
Private Domestic Water Supply ¹	X	X		
Industrial Water Supply	X	X	X	X
Irrigation	X	X	X	X
Livestock Watering	X	X	X	X
Fish & Aquatic Life ²	X	X		X
Wildlife & Hunting	X	X	X	X
Fishing	X	X		X
Boating	X	X (at mouth)		
Water Contact Recreation	X	X	X	X
Aesthetic Quality	X	X	X	X
Hydro Power	X	X	X	X
Commercial Navigation and Transportation				

¹With adequate pretreatment (filtration & disinfection) and natural quality to meet drinking water standards.

²See also Figures 310A, 310B, 310C, and 310D for fish use designations for this basin.

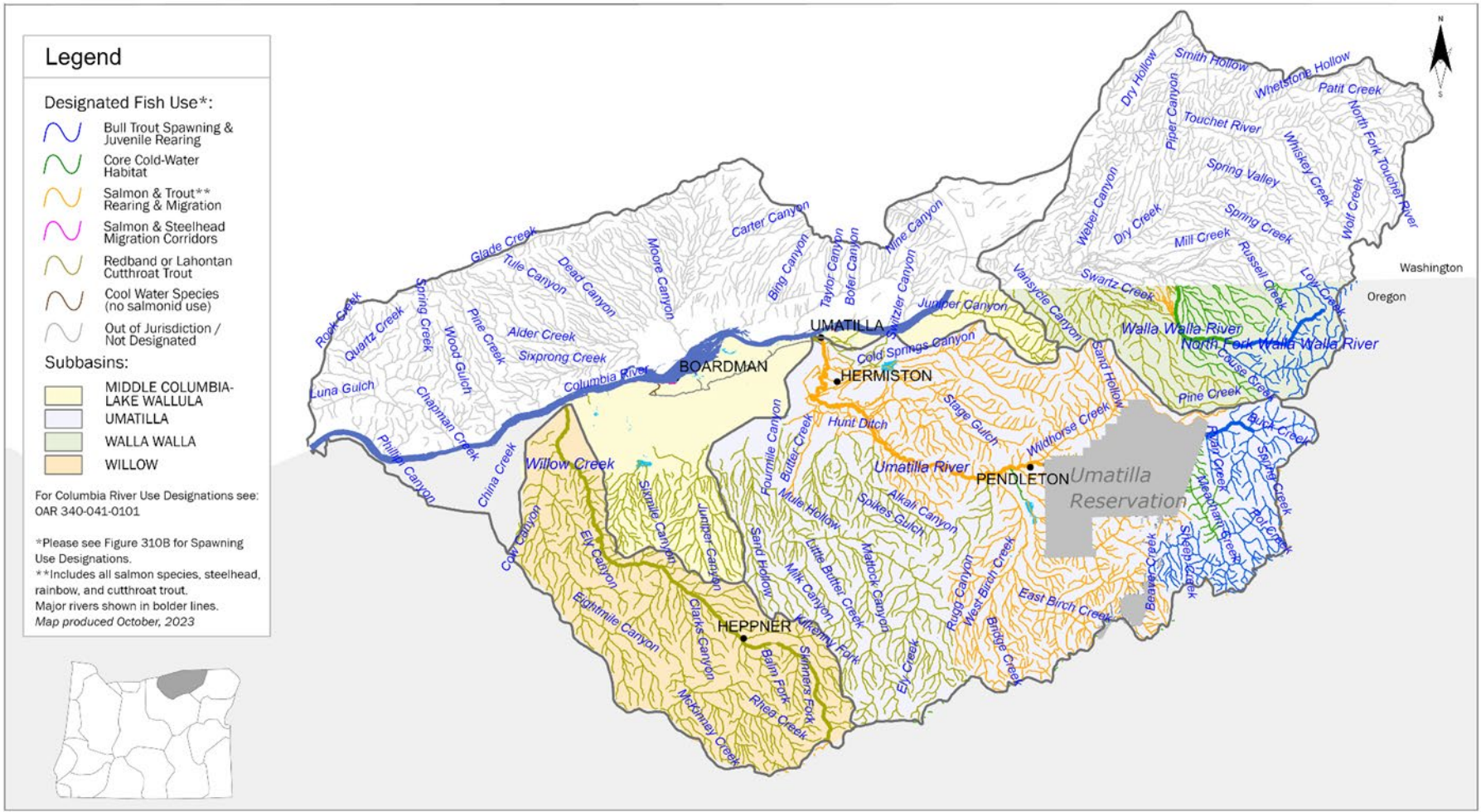
³The West Division Main Canal extends from the point of diversion from the Umatilla River to the confluence with the Columbia River. The canal consists of two segments. The constructed channel segment extends from the Umatilla River 27 miles down gradient to the flow control gate at the end of the concrete structure as it was originally built (concrete-lining was later added to parts of the overflow channels). The overflow channels segment extends from the lower end of the constructed channel to the outflow to the Columbia River.



State of Oregon Department of Environmental Quality

OAR 340-041-0310 – Figure 310A

Year-Round Temperature Fish Use Designations Umatilla and Walla Walla Basins, Oregon

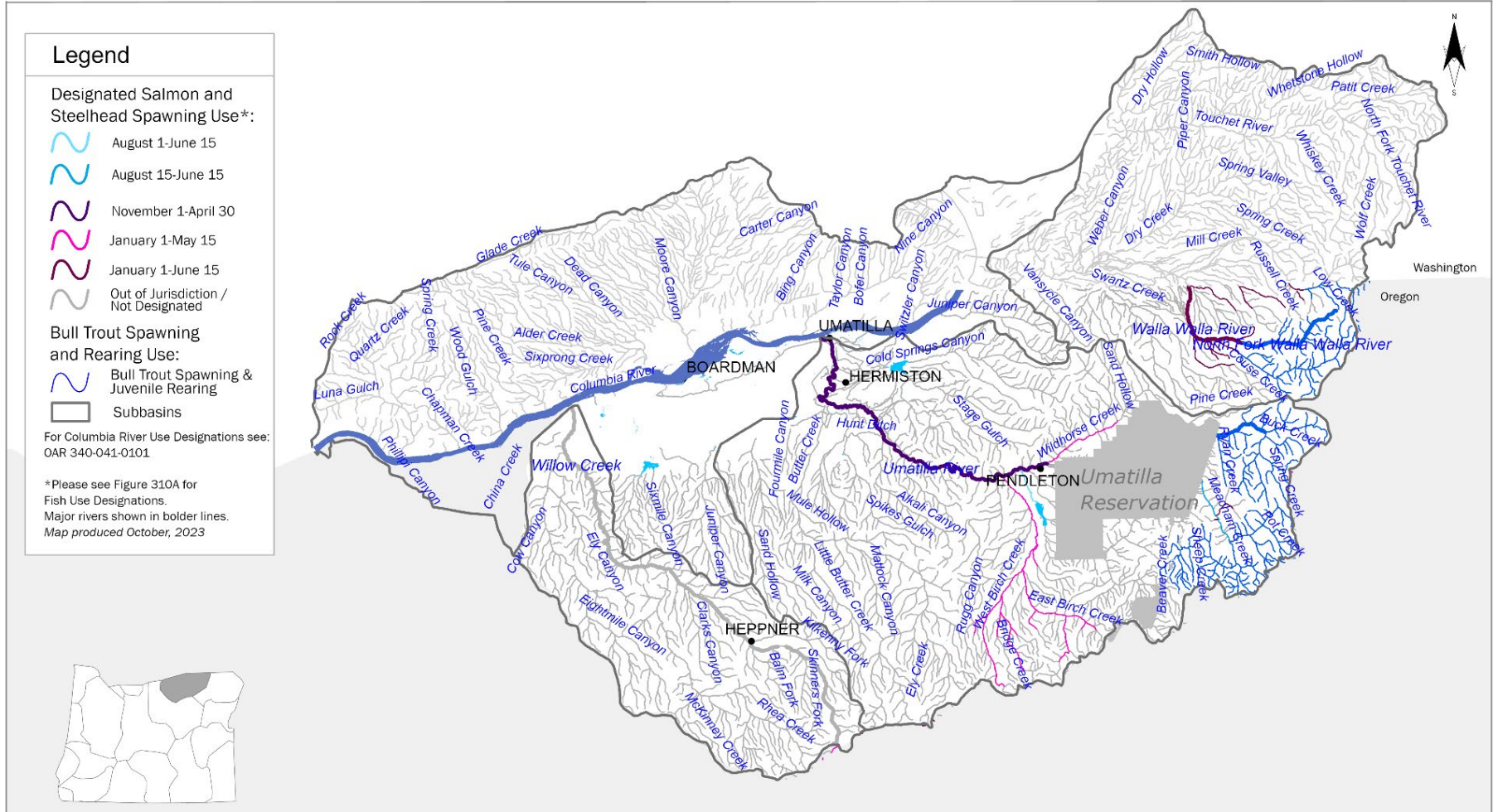




State of Oregon Department of Environmental Quality

OAR 340-041-0310 – Figure 310B

Seasonal Salmon and Steelhead Spawning Use Designations Umatilla and Walla Walla Basins, Oregon

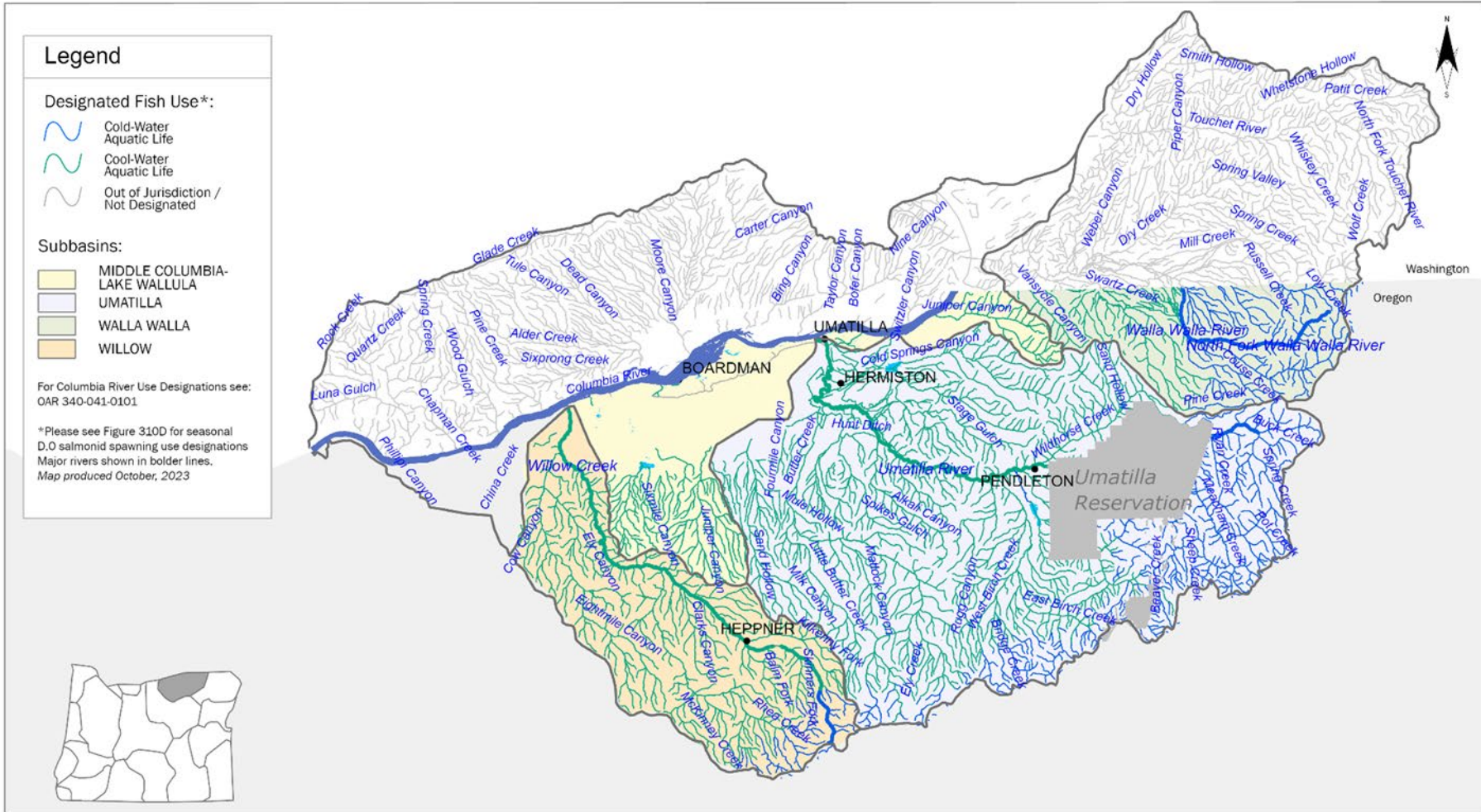




State of Oregon Department of Environmental Quality

OAR 340-041-0310 – Figure 310C

Year-Round Dissolved Oxygen Fish Use Designations Umatilla and Walla Walla Basins, Oregon





State of Oregon Department of Environmental Quality

OAR 340-041-0310 – Figure 310D

Seasonal Dissolved Oxygen Salmonid Spawning Use Designations Umatilla and Walla Walla Basins, Oregon

