

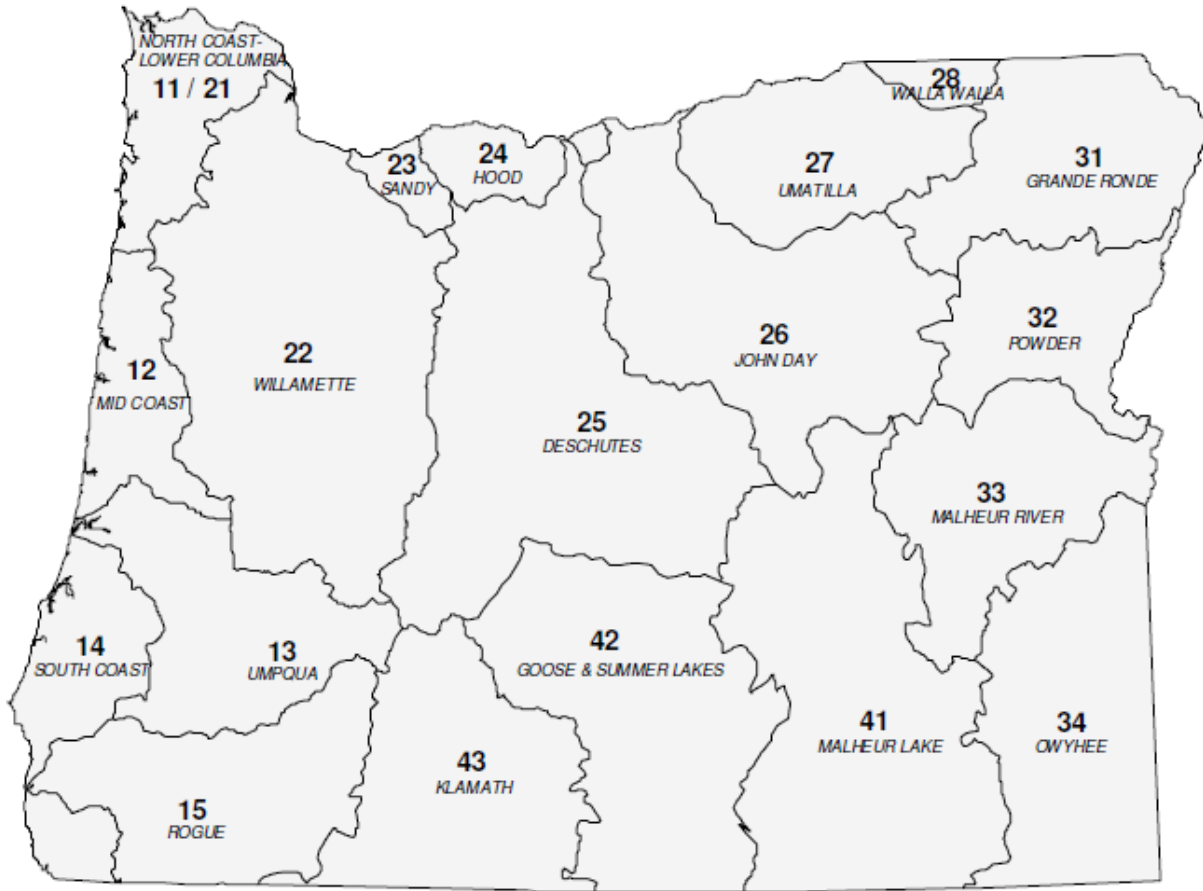


State of Oregon Department of Environmental Quality

OAR 340-041-0230

Tables and Figures

Figure 1: Oregon Basin Index Map



| Basin Name | Basin # | OAR # |
|---------------------|---------|--------------|
| DESCHUTES | 25 | 340-041-0130 |
| GOOSE & SUMMER LKS | 42 | 340-041-0140 |
| GRANDE RONDE | 31 | 340-041-0151 |
| HOOD | 24 | 340-041-0160 |
| JOHN DAY | 26 | 340-041-0170 |
| KLAMATH | 43 | 340-041-0180 |
| MALHEUR LAKE | 41 | 340-041-0190 |
| MALHEUR RIVER | 33 | 340-041-0201 |
| MD COAST | 12 | 340-041-0220 |
| NORTH COAST-LWR COL | 11-21 | 340-041-0230 |
| OWYHEE | 34 | 340-041-0250 |
| POWDER | 32 | 340-041-0260 |
| ROGUE | 15 | 340-041-0271 |
| SANDY | 23 | 340-041-0286 |
| SOUTH COAST | 14 | 340-041-0300 |
| UMATILLA | 27 | 340-041-0310 |
| UMPQUA | 13 | 340-041-0320 |
| WALLA WALLA | 28 | 340-041-0330 |
| WILLAMETTE | 22 | 340-041-0340 |



OAR 340-041-0230
Table 230A
Designated Beneficial Uses
North Coast Basin

| Beneficial Uses | Estuaries & Adjacent Maine Waters | All Steams & Tributaries Thereto |
|--|--|---|
| Public Domestic Water Supply ¹ | | X |
| Private Domestic Water Supply ¹ | | X |
| Industrial Water Supply | X | X |
| Irrigation | | X |
| Livestock Watering | | X |
| Fish & Aquatic Life ² | X | X |
| Wildlife & Hunting | X | X |
| Fishing | X | X |
| Boating | X | X |
| Water Contact Recreation | X | X |
| Aesthetic Quality | X | X |
| Hydro Power | | |
| Commercial Navigation & Transportation | X | |

¹ With adequate pretreatment (filtration & disinfection) and natural quality to meet drinking water standards.

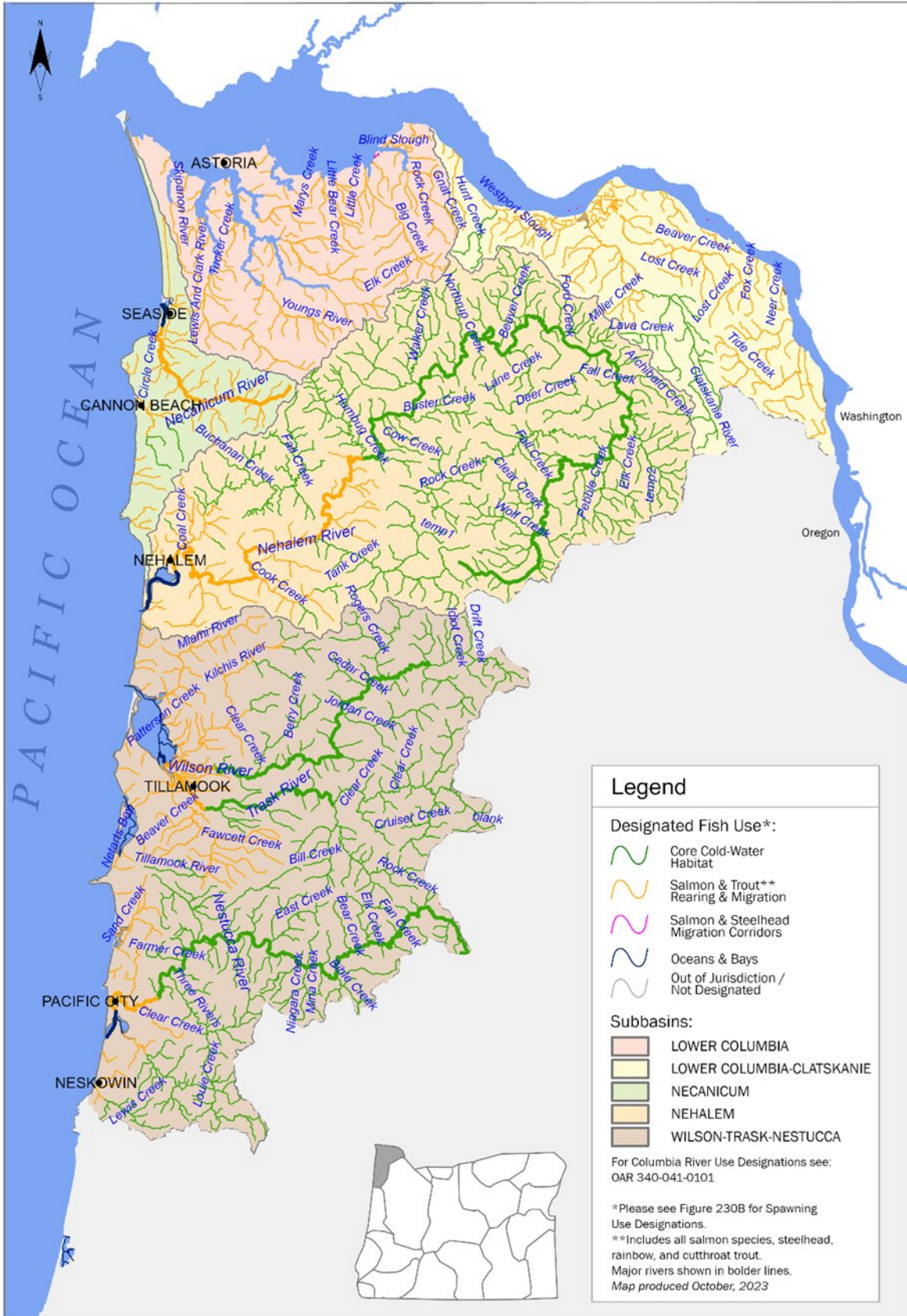
² See also Figures 230A, 230B, 230I and 230J for fish use designations for this basin.



State of Oregon Department of Environmental Quality

OAR 340-041-0230 – Figure 230A

Year-Round Temperature Fish Use Designations North Coast Basin, Oregon

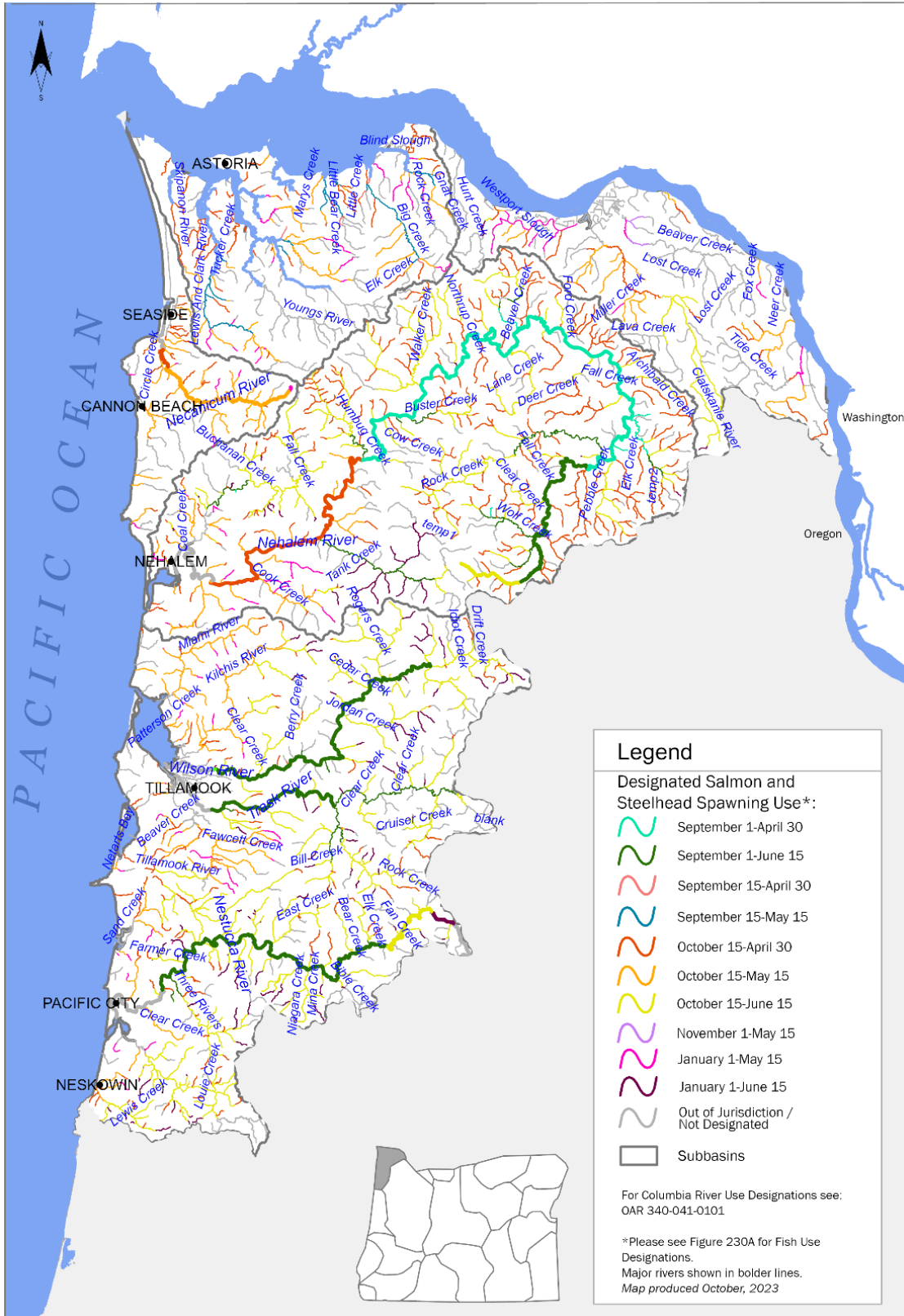




State of Oregon Department of Environmental Quality

OAR 340-041-0230 – Figure 230B

Seasonal Salmon and Steelhead Spawning Use Designations North Coast Basin, Oregon

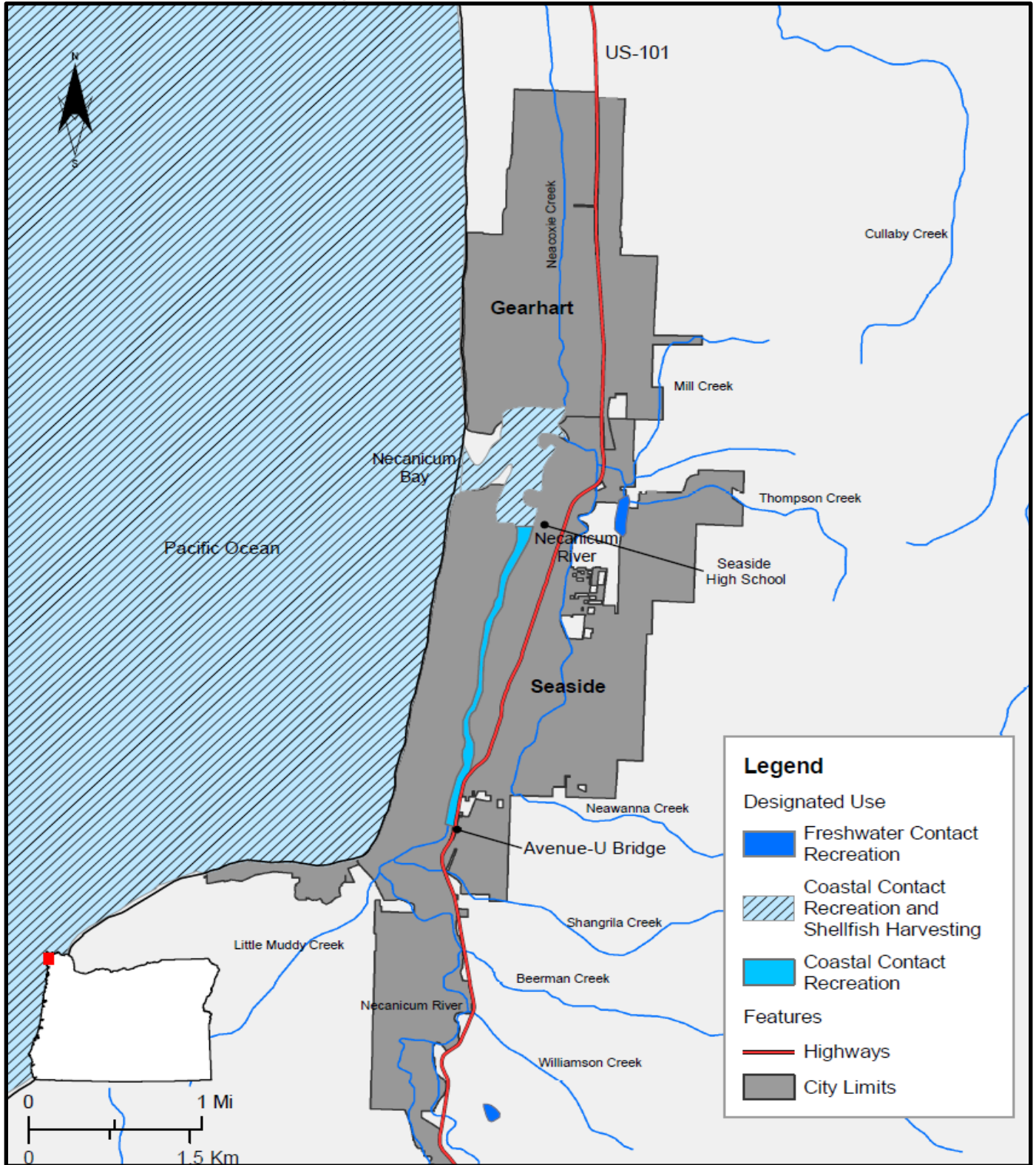




State of Oregon Department of Environmental Quality

OAR 340-041-0230 – Figure 230C

Water Contact Recreation and Shellfish Harvesting Designated Uses Necanicum Bay, Oregon

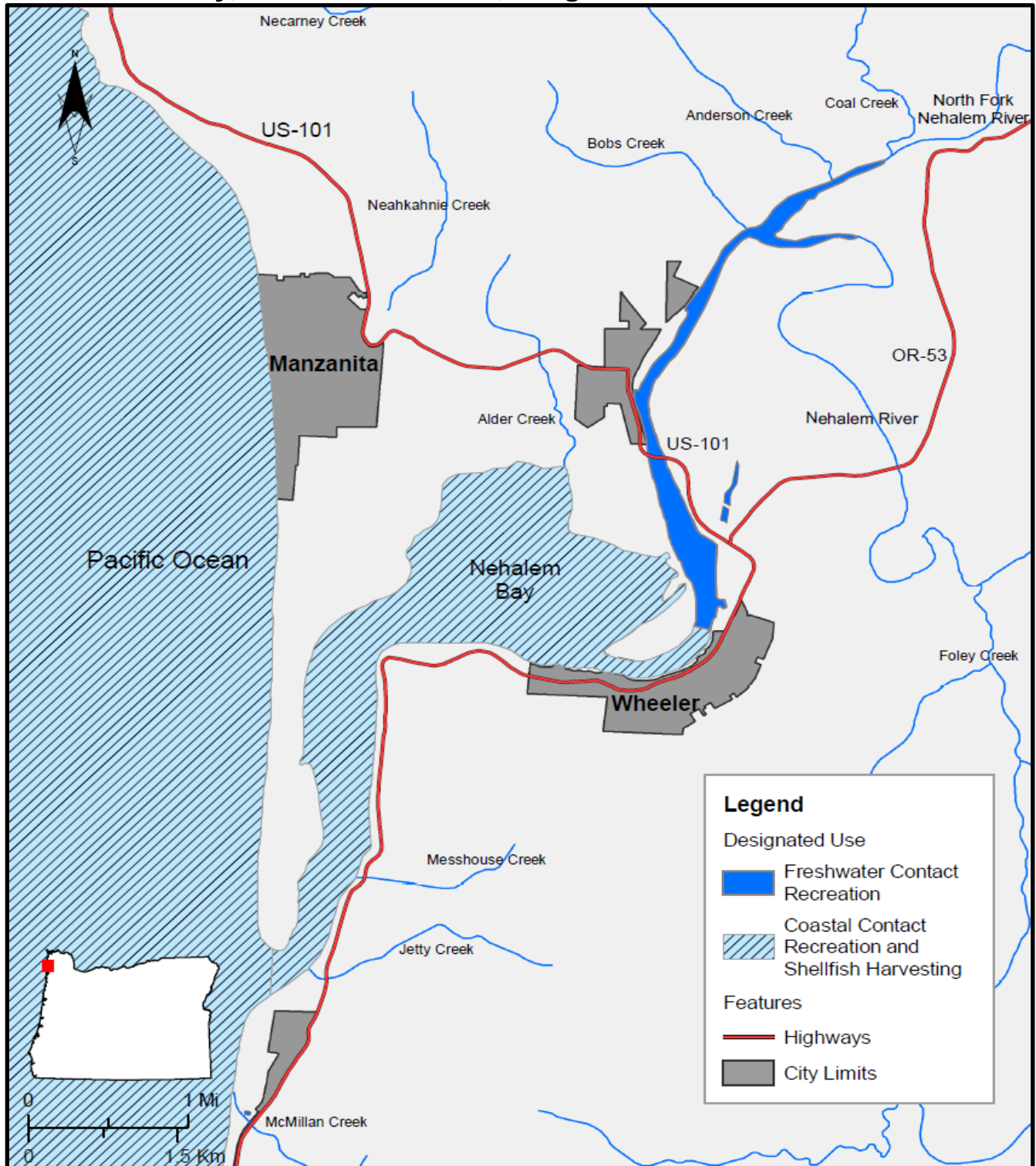




State of Oregon Department of Environmental Quality

OAR 340-041-0230 – Figure 230D

Water Contact Recreation and Shellfish Harvesting Designated Uses Nehalem Bay, North Coast Basin, Oregon

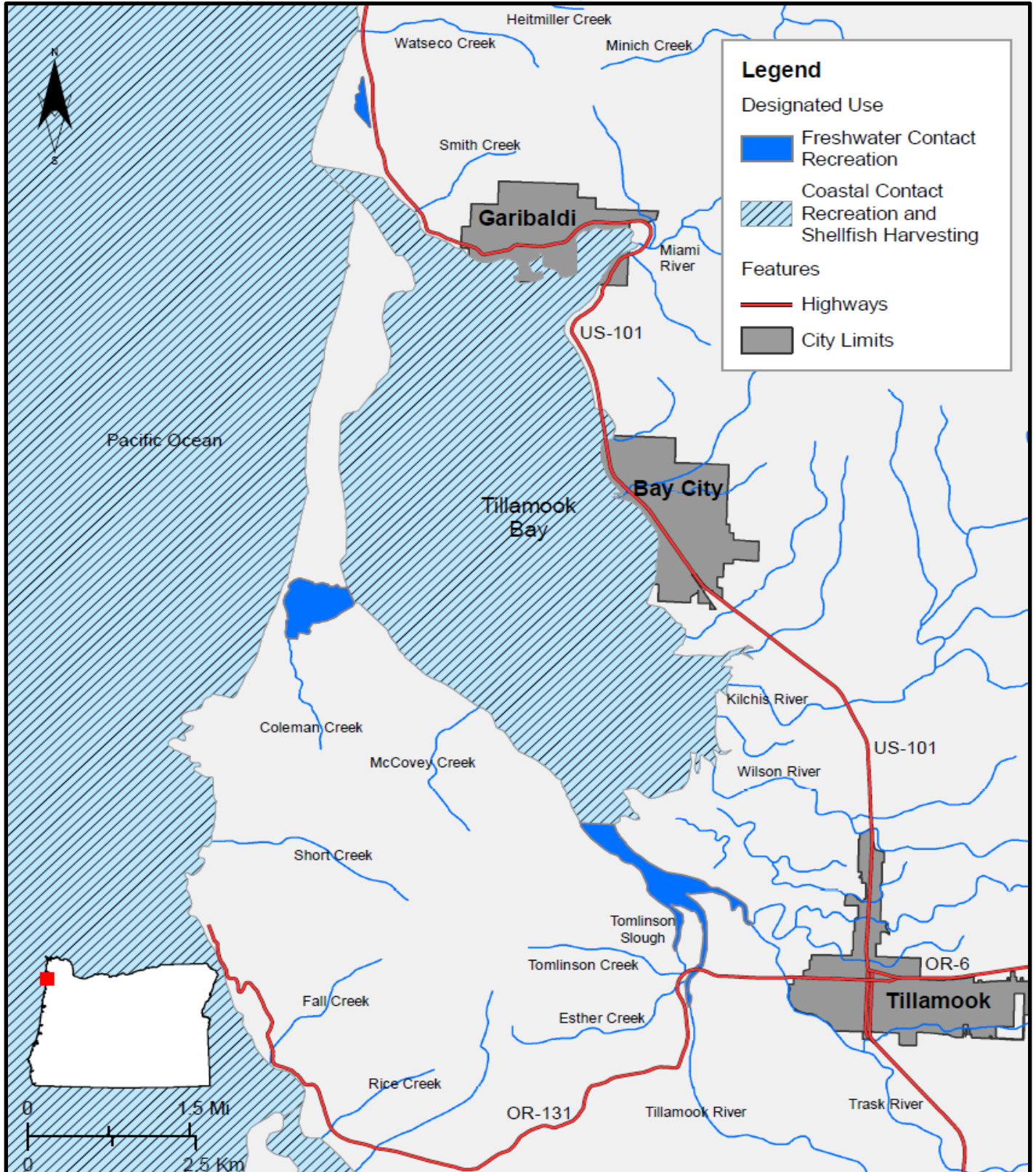




State of Oregon Department of Environmental Quality

OAR 340-041-0230 – Figure 230E

Water Contact Recreation and Shellfish Harvesting Designated Uses Tillamook Bay, North Coast Basin, Oregon

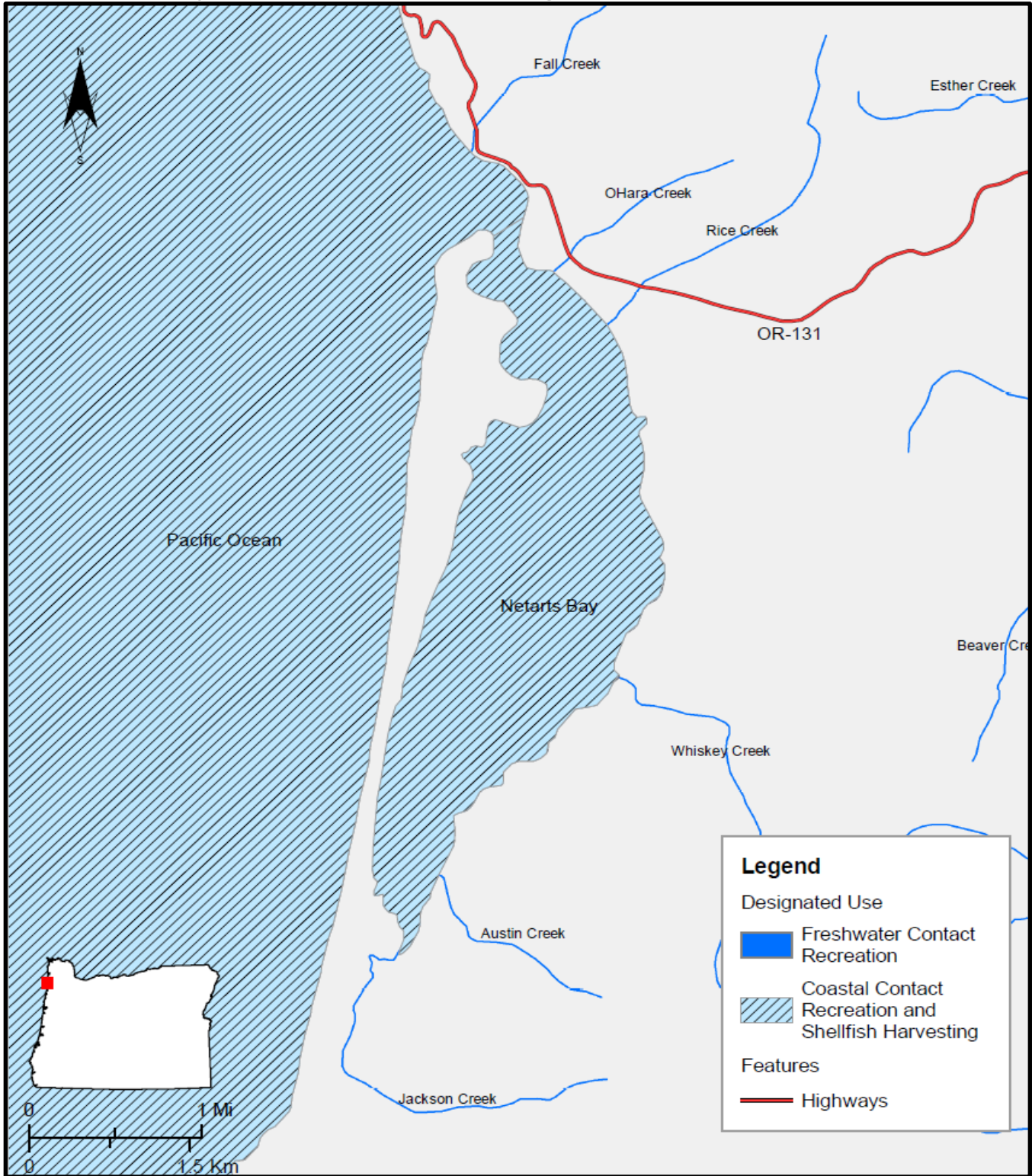




State of Oregon Department of Environmental Quality

OAR 340-041-0230 – Figure 230F

Water Contact Recreation and Shellfish Harvesting Designated Uses Netarts Bay, North Coast Basin, Oregon

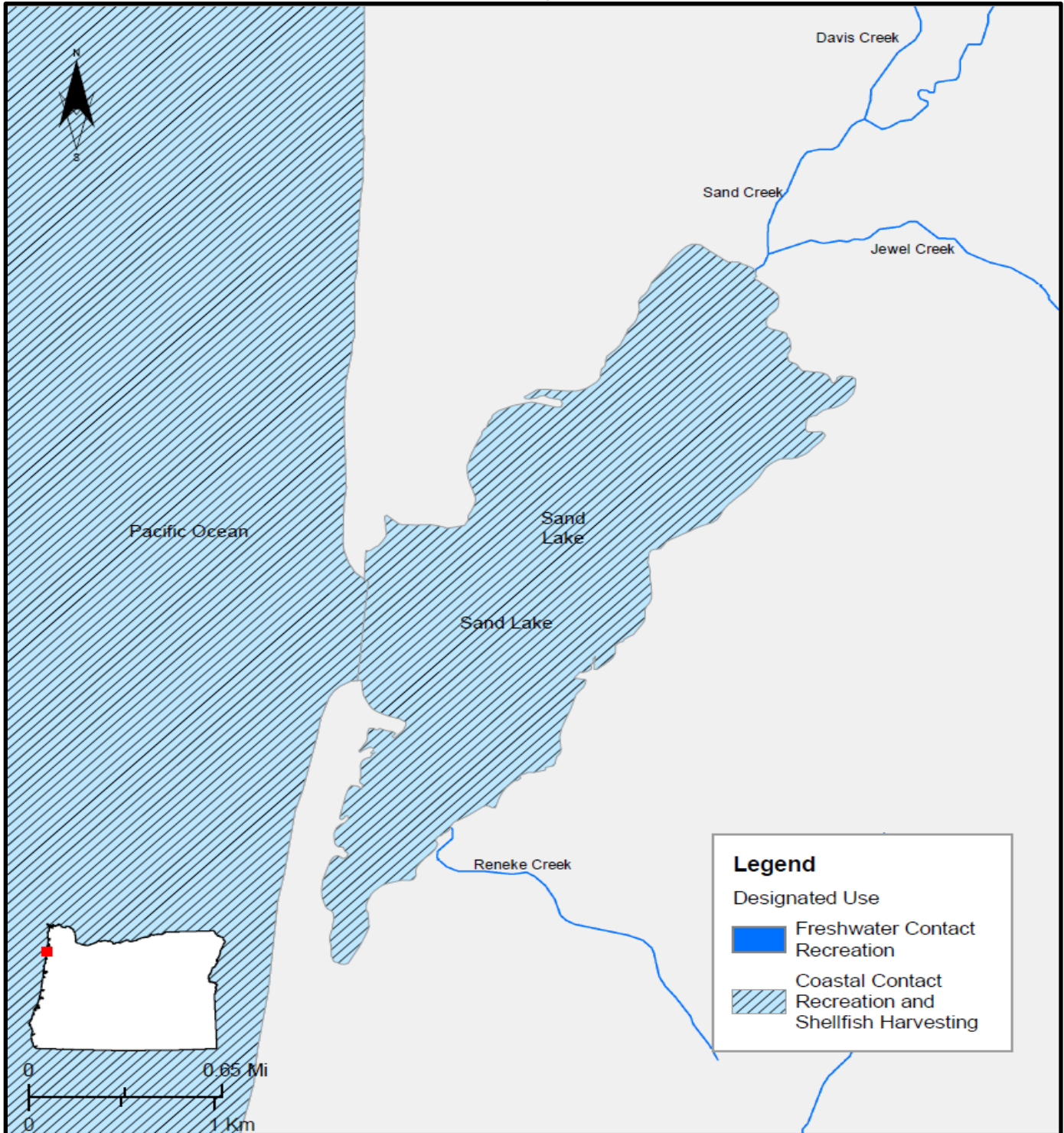




State of Oregon Department of Environmental Quality

OAR 340-041-0230 – Figure 230G

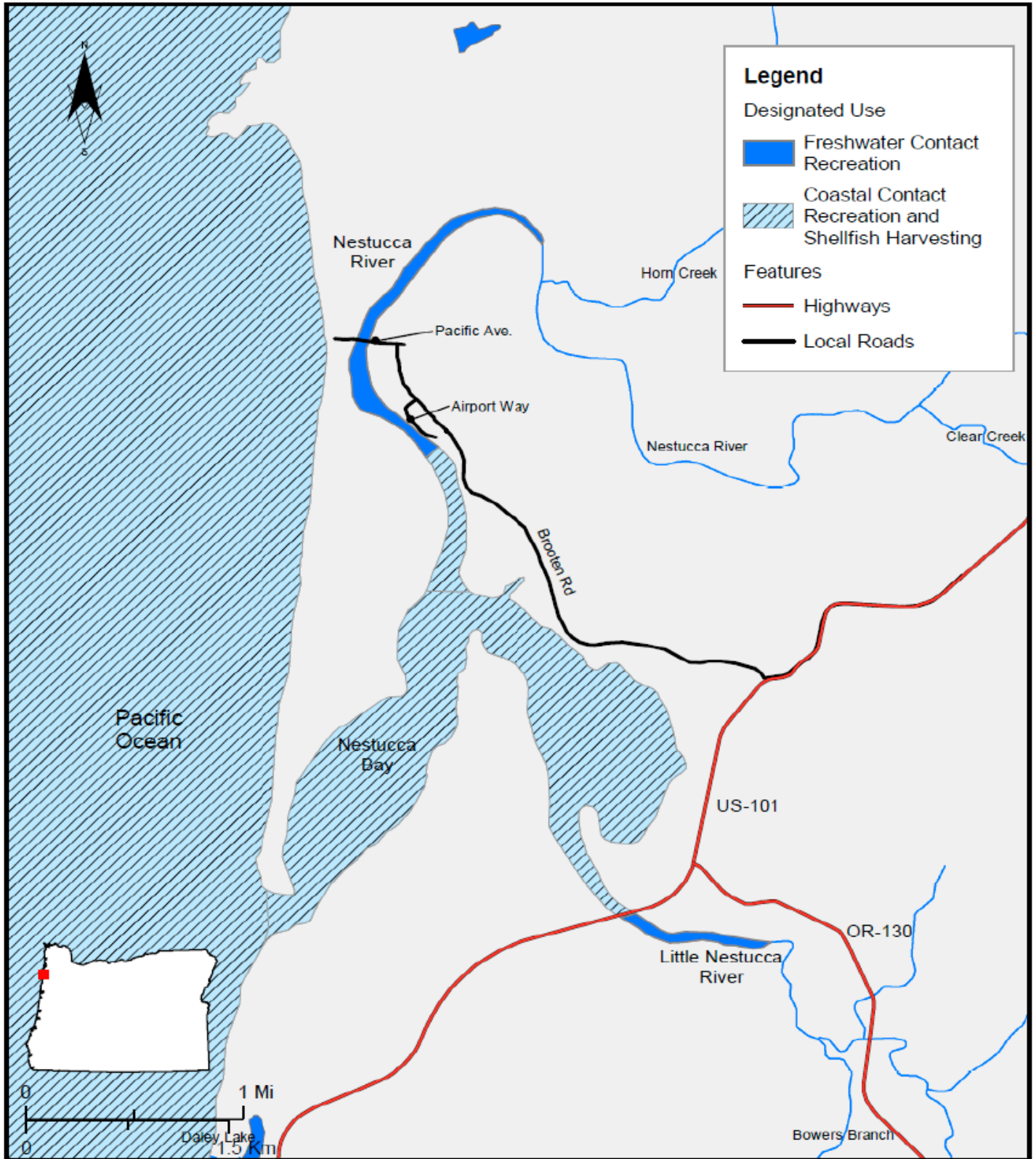
Water Contact Recreation and Shellfish Harvesting Designated Uses Sand Lake, North Coast Basin, Oregon





OAR 340-041-0230 – Figure 230H

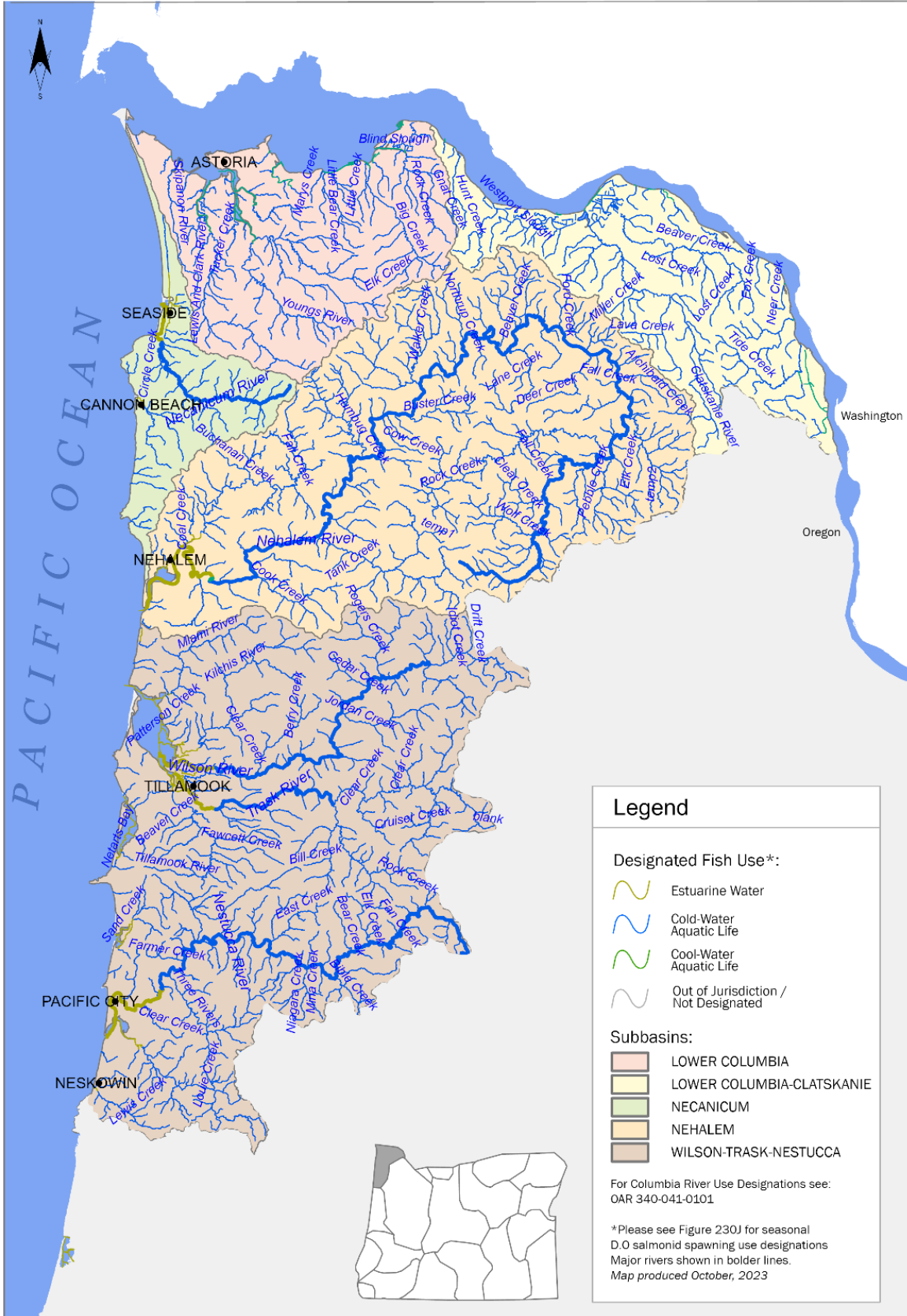
Water Contact Recreation and Shellfish Harvesting Designated Uses Nestucca Bay, North Coast Basin, Oregon





OAR 340-041-0130 – Figure 230I

Year-Round Dissolved Oxygen Fish Use Designations North Coast Basin, Oregon





OAR 340-041-0230 – Figure 230J

Seasonal Dissolved Oxygen Salmonid Spawning Use Designations North Coast Basin, Oregon

