

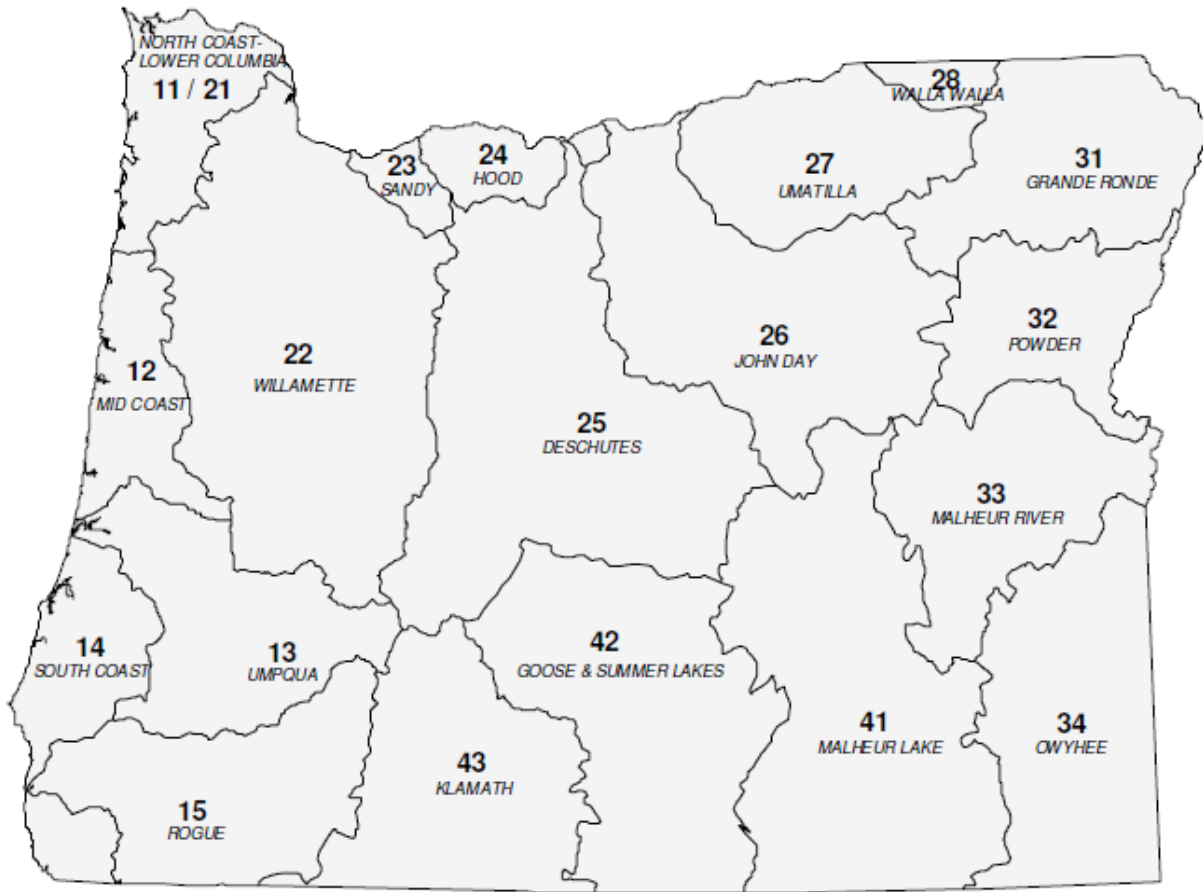


State of Oregon Department of Environmental Quality

OAR 340-041-0220

Tables and Figures

Figure 1: Oregon Basin Index Map



| Basin Name | Basin # | OAR # |
|---------------------|---------|--------------|
| DESCHUTES | 25 | 340-041-0130 |
| GOOSE & SUMMER LKS | 42 | 340-041-0140 |
| GRANDE RONDE | 31 | 340-041-0151 |
| HOOD | 24 | 340-041-0160 |
| JOHN DAY | 26 | 340-041-0170 |
| KLAMATH | 43 | 340-041-0180 |
| MALHEUR LAKE | 41 | 340-041-0190 |
| MALHEUR RIVER | 33 | 340-041-0201 |
| MD COAST | 12 | 340-041-0220 |
| NORTH COAST-LWR COL | 11-21 | 340-041-0230 |
| OWYHEE | 34 | 340-041-0250 |
| POWDER | 32 | 340-041-0260 |
| ROGUE | 15 | 340-041-0271 |
| SANDY | 23 | 340-041-0286 |
| SOUTH COAST | 14 | 340-041-0300 |
| UMATILLA | 27 | 340-041-0310 |
| UMPQUA | 13 | 340-041-0320 |
| WALLA WALLA | 28 | 340-041-0330 |
| WILLAMETTE | 22 | 340-041-0340 |



OAR 340-041-0220

Table 220A

Designated Beneficial Uses - Mid Coast Basin

| Beneficial Uses | Estuaries & Adjacent Marine Waters | All Steams & Tributaries Thereto |
|--|------------------------------------|----------------------------------|
| Public Domestic Water Supply ¹ | | X |
| Private Domestic Water Supply ¹ | | X |
| Industrial Water Supply | X | X |
| Irrigation | | X |
| Livestock Watering | | X |
| Fish & Aquatic Life ² | X | X |
| Wildlife & Hunting | X | X |
| Fishing ³ | X | X |
| Boating | X | X |
| Water Contact Recreation ³ | X | X |
| Aesthetic Quality | X | X |
| Hydro Power | | X |
| Commercial Navigation & Transportation | X | |

¹ With adequate pretreatment (filtration & disinfection) and natural quality to meet drinking water standards.

² See also Figures 230A, 230B, 230I and 230J for fish use designations for this basin.

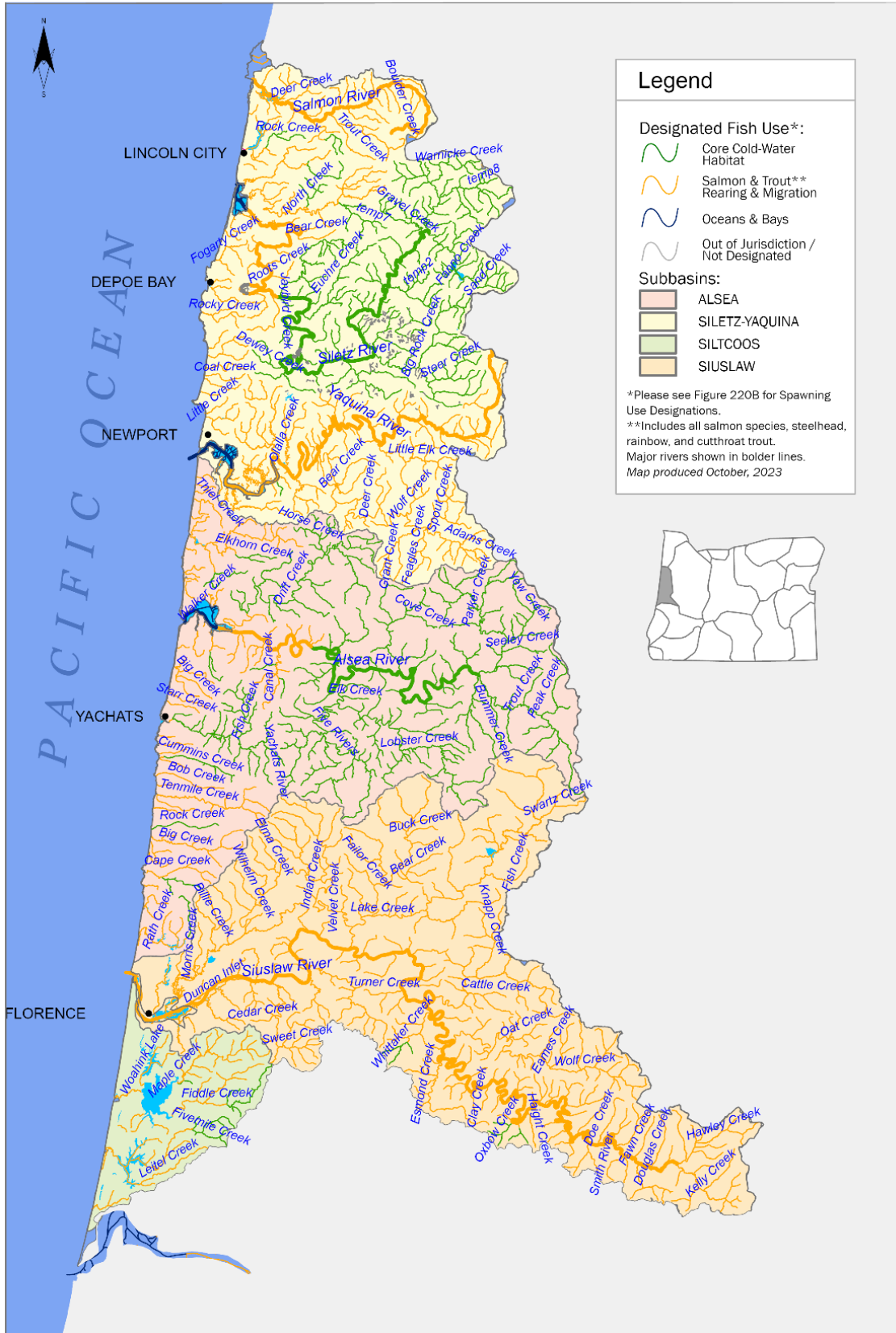
³ For coastal water contact recreation and shellfish harvesting uses, see also Figures 220C (Salmon River Estuary), 220D (Siletz Bay), 220E (Yaquina Bay), 220F (Alsea River Estuary), 220G (Yachats River Estuary), and 220H (Siuslaw River Estuary)



State of Oregon Department of Environmental Quality

OAR 340-041-0220 – Figure 220A

Year-Round Temperature Fish Use Designations Mid Coast Basin, Oregon

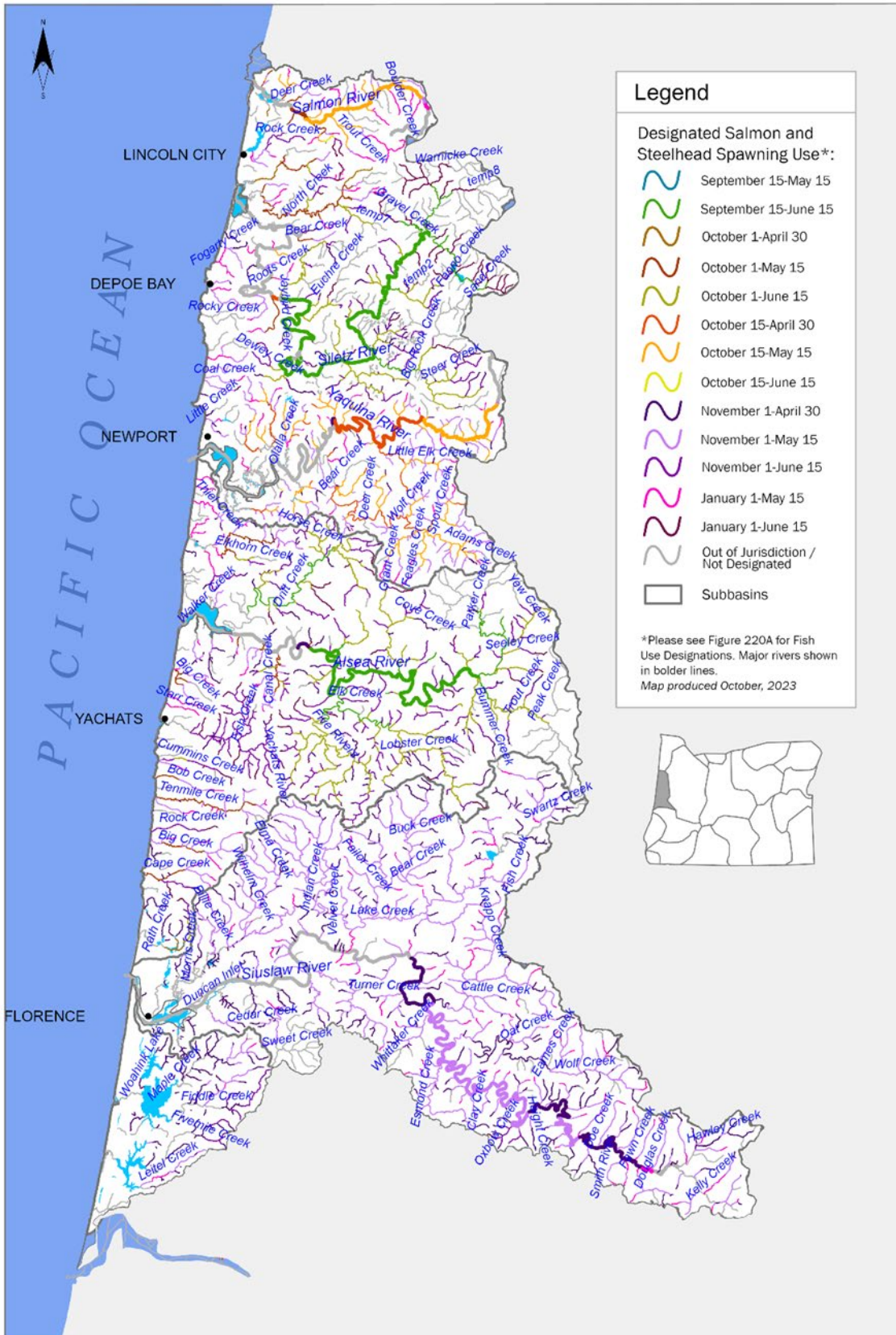




OAR 340-041-0220 – Figure 220B

Seasonal Salmon and Steelhead Spawning Use Designations

Mid Coast Basin, Oregon

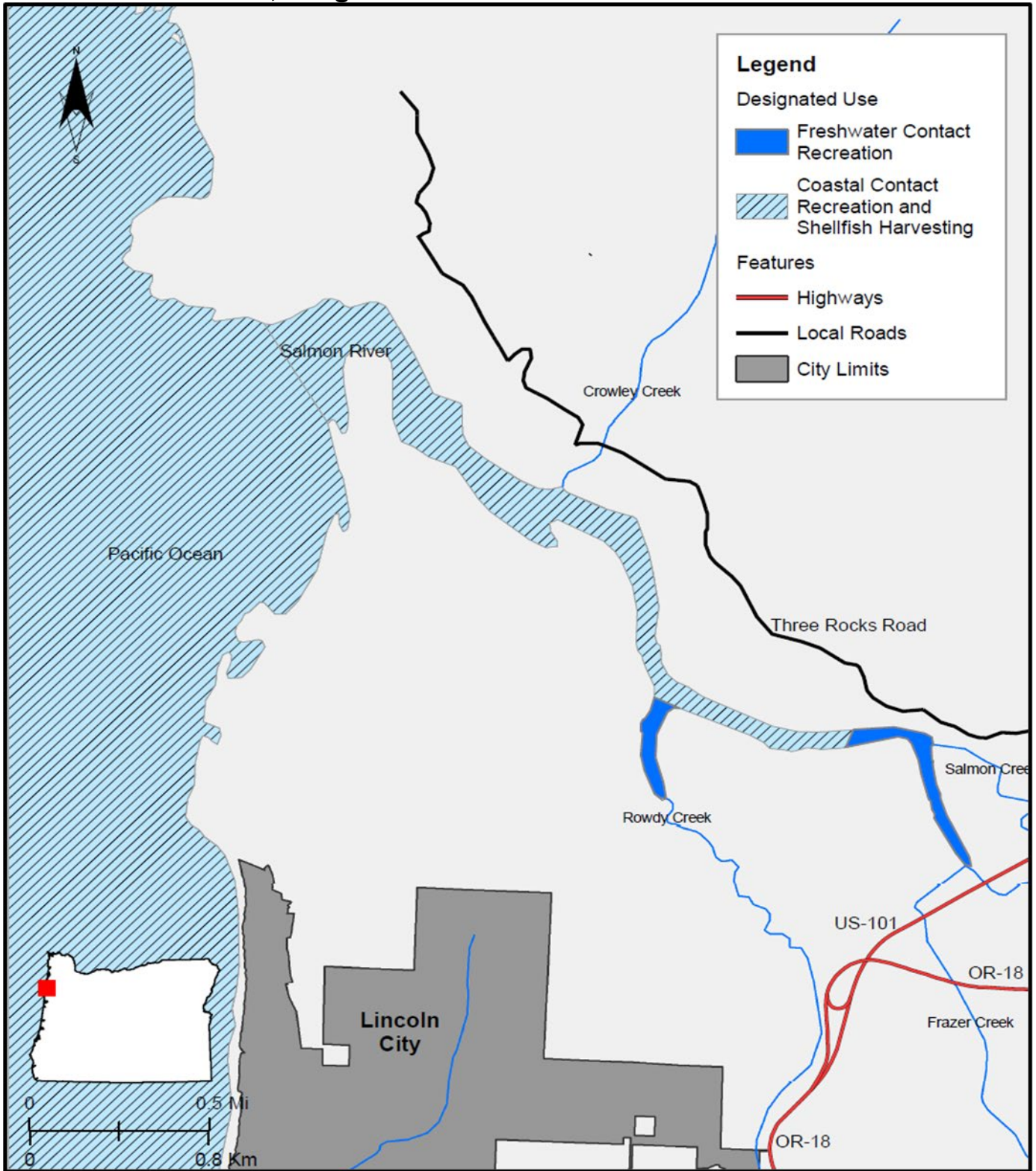




State of Oregon Department of Environmental Quality

OAR 340-041-0220 – Figure 220C

Water Contact Recreation and Shellfish Harvesting Designated Uses Mid Coast Basin, Oregon

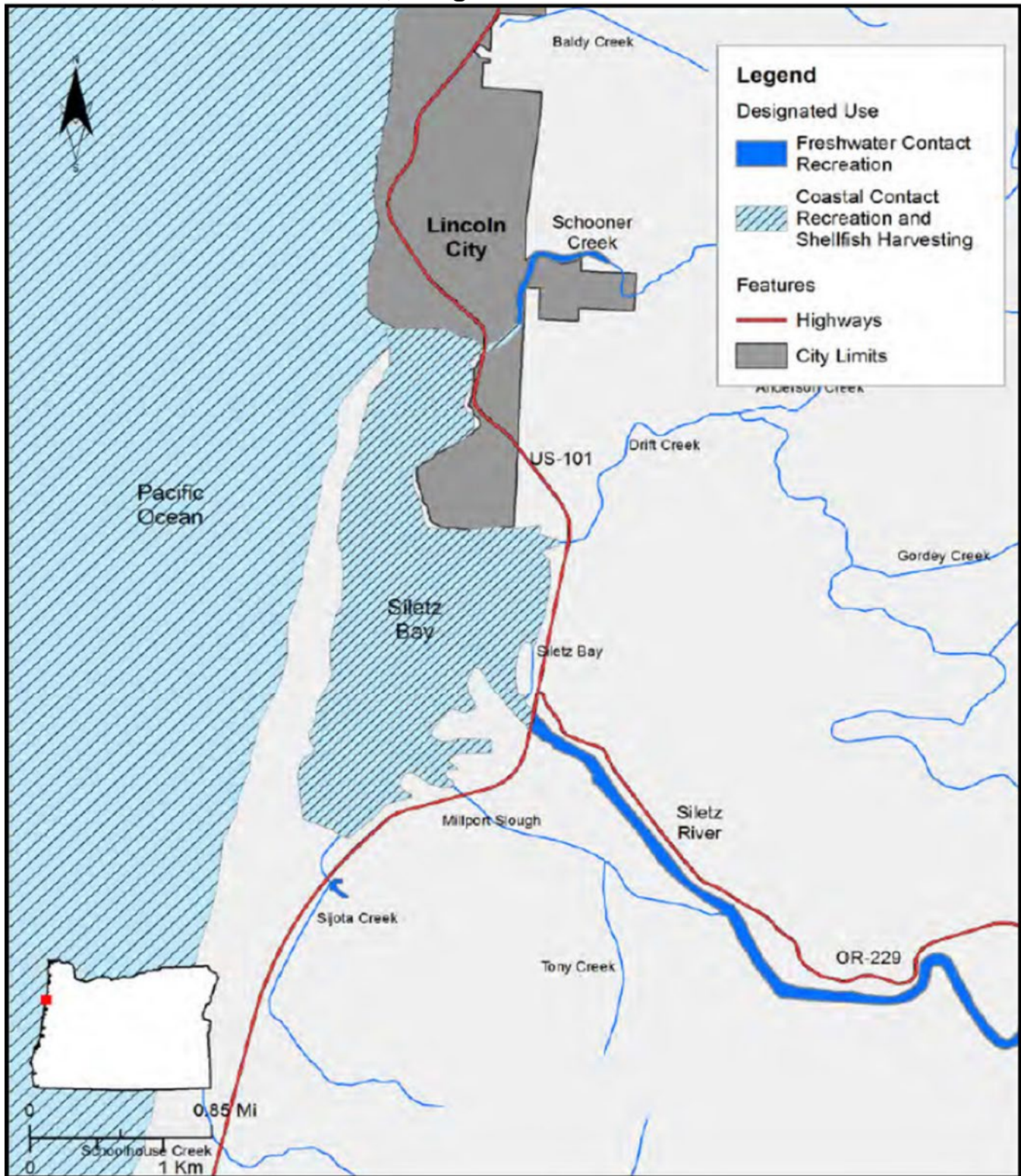




State of Oregon Department of Environmental Quality

OAR 340-041-0220 – Figure 220D

Water Contact Recreation and Shellfish Harvesting Designated Uses Siletz River, Mid Coast Basin, Oregon

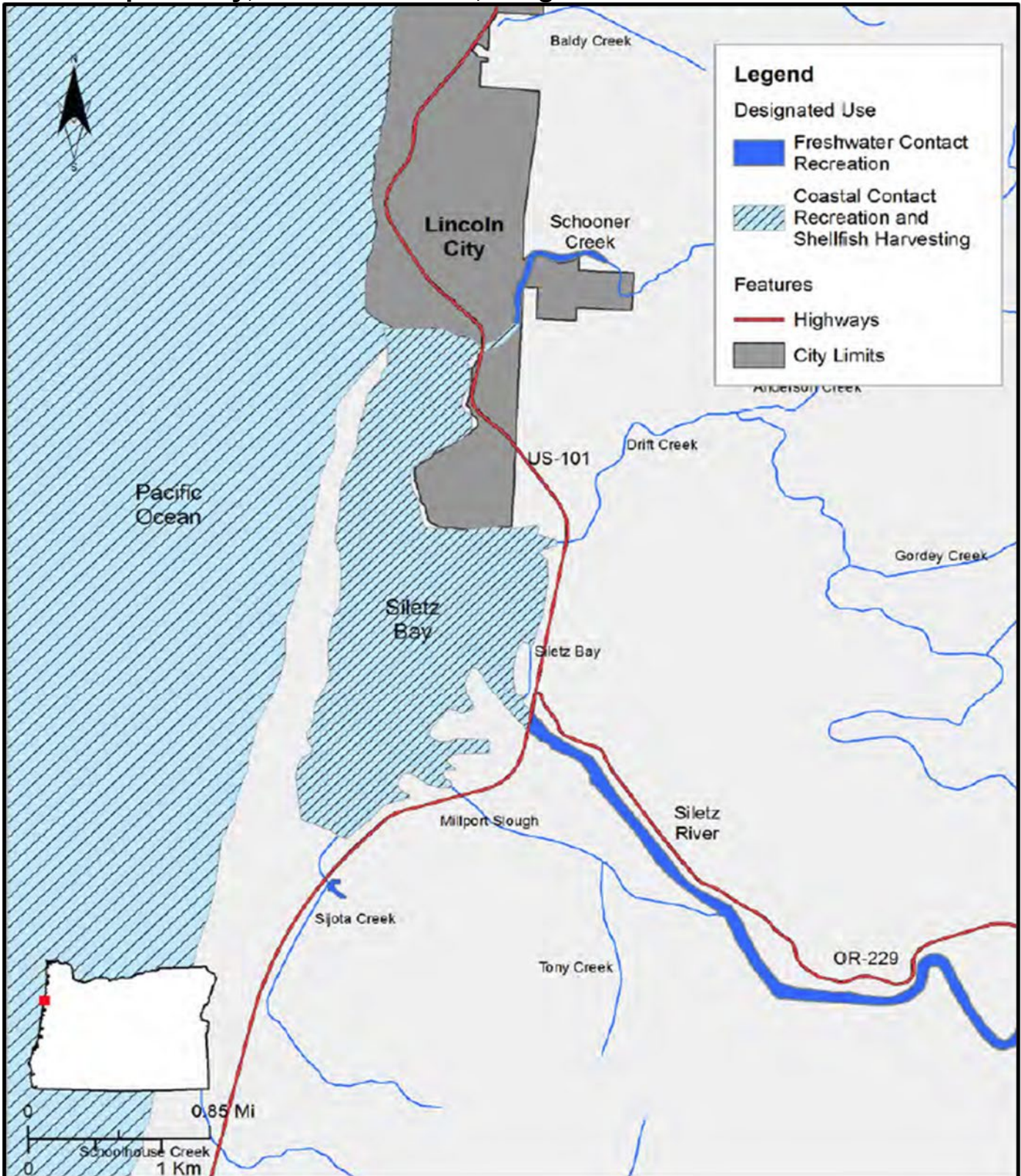




State of Oregon Department of Environmental Quality

OAR 340-041-0220 – Figure 220E

Water Contact Recreation and Shellfish Harvesting Designated Uses Yaquina Bay, Mid Coast Basin, Oregon

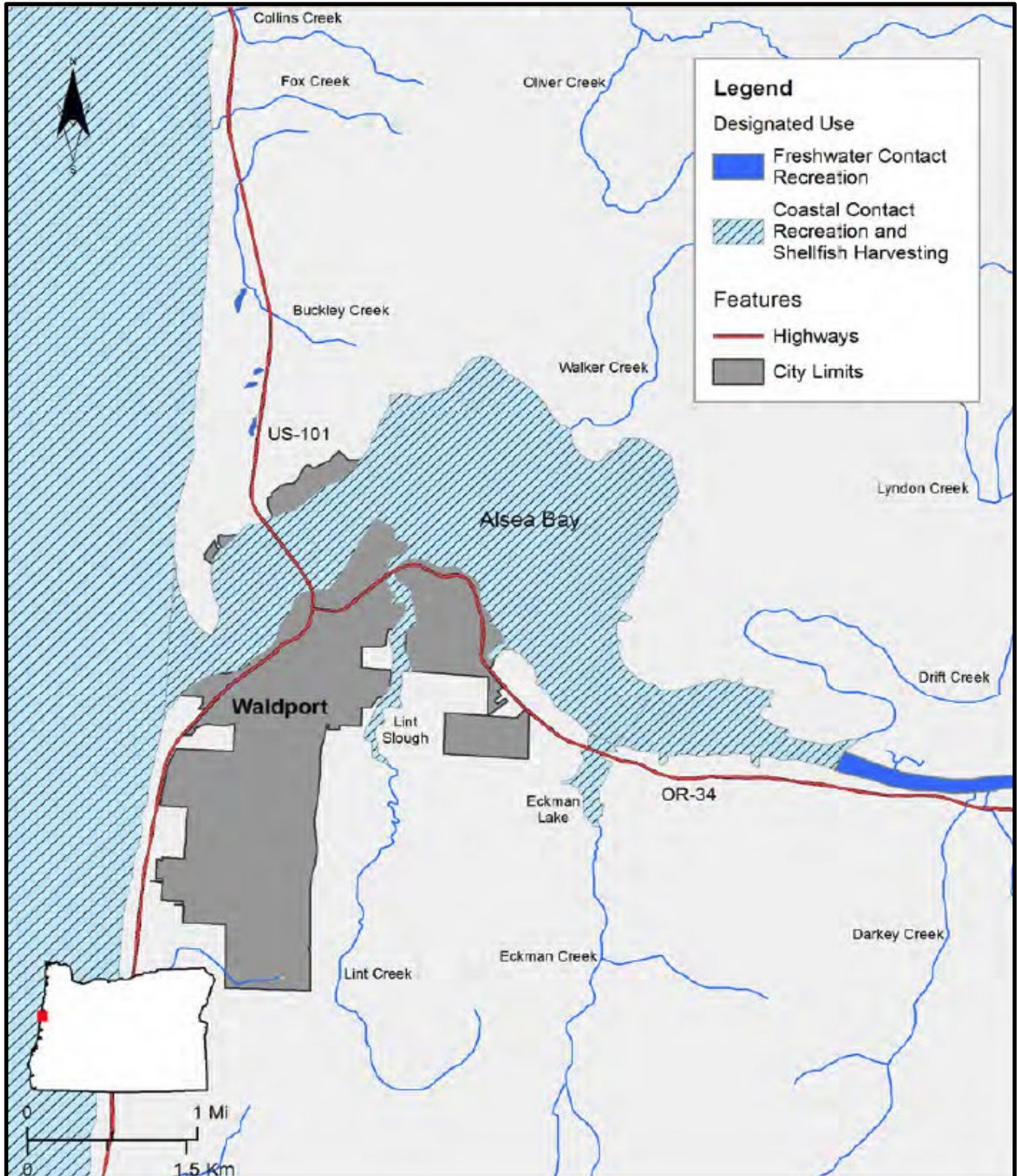




State of Oregon Department of Environmental Quality

OAR 340-041-0220 – Figure 220F

Water Contact Recreation and Shellfish Harvesting Designated Uses Asea River, Mid Coast Basin, Oregon

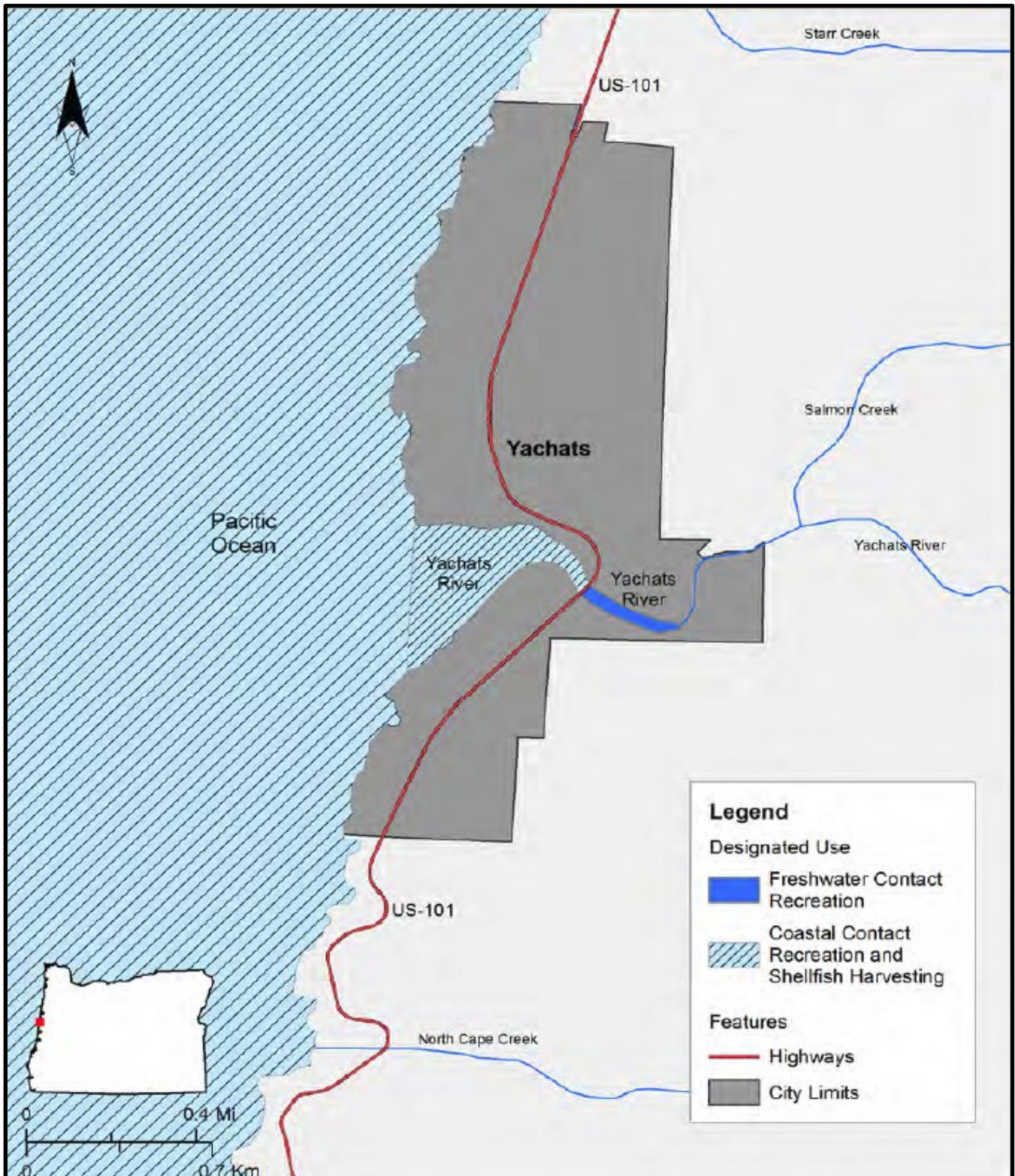




State of Oregon Department of Environmental Quality

OAR 340-041-0220 – Figure 220G

Water Contact Recreation and Shellfish Harvesting Designated Uses Yachats River, Mid Coast Basin, Oregon

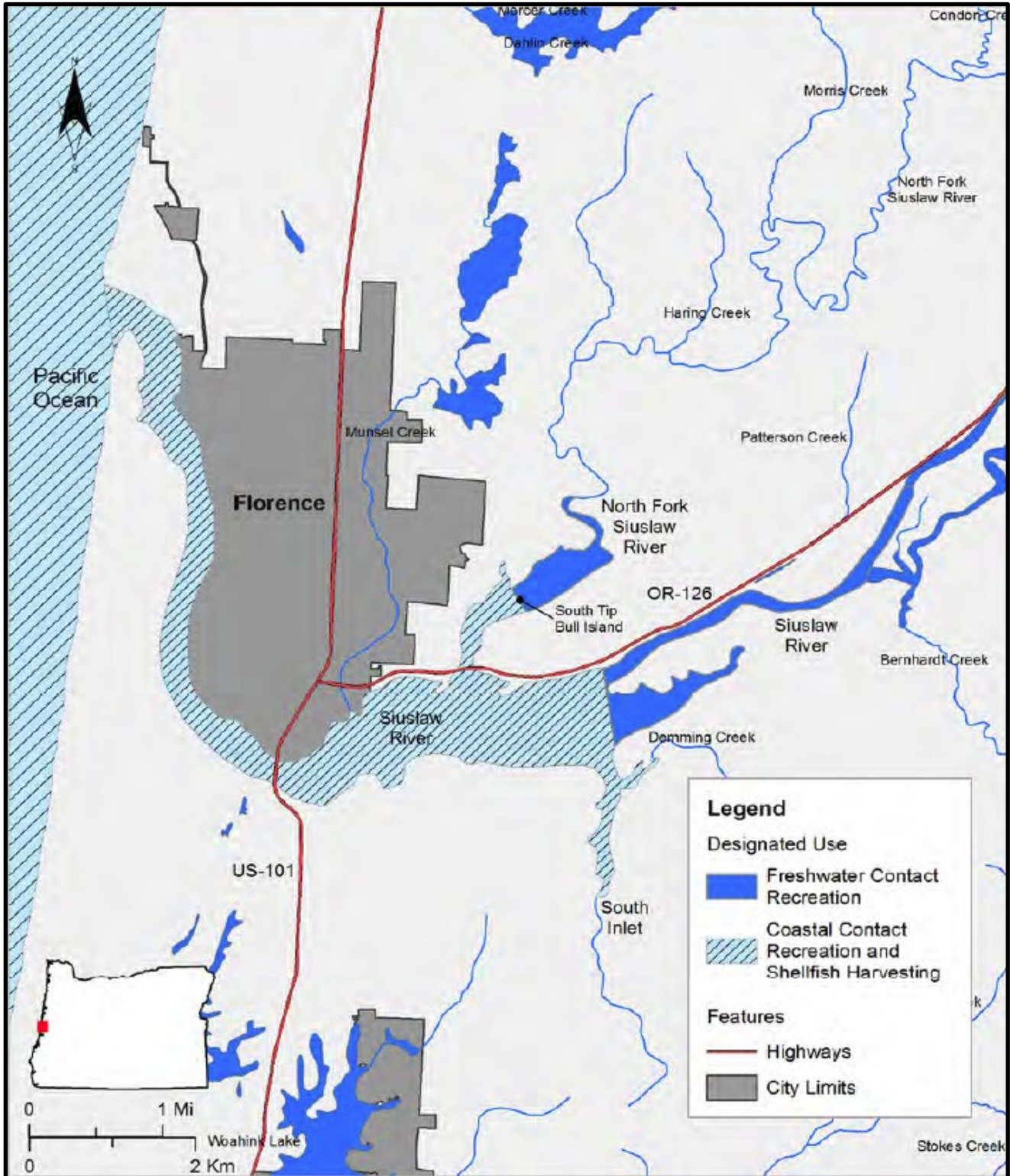




State of Oregon Department of Environmental Quality

OAR 340-041-0220 – Figure 220H

Water Contact Recreation and Shellfish Harvesting Designated Uses Siuslaw River, Mid Coast Basin, Oregon

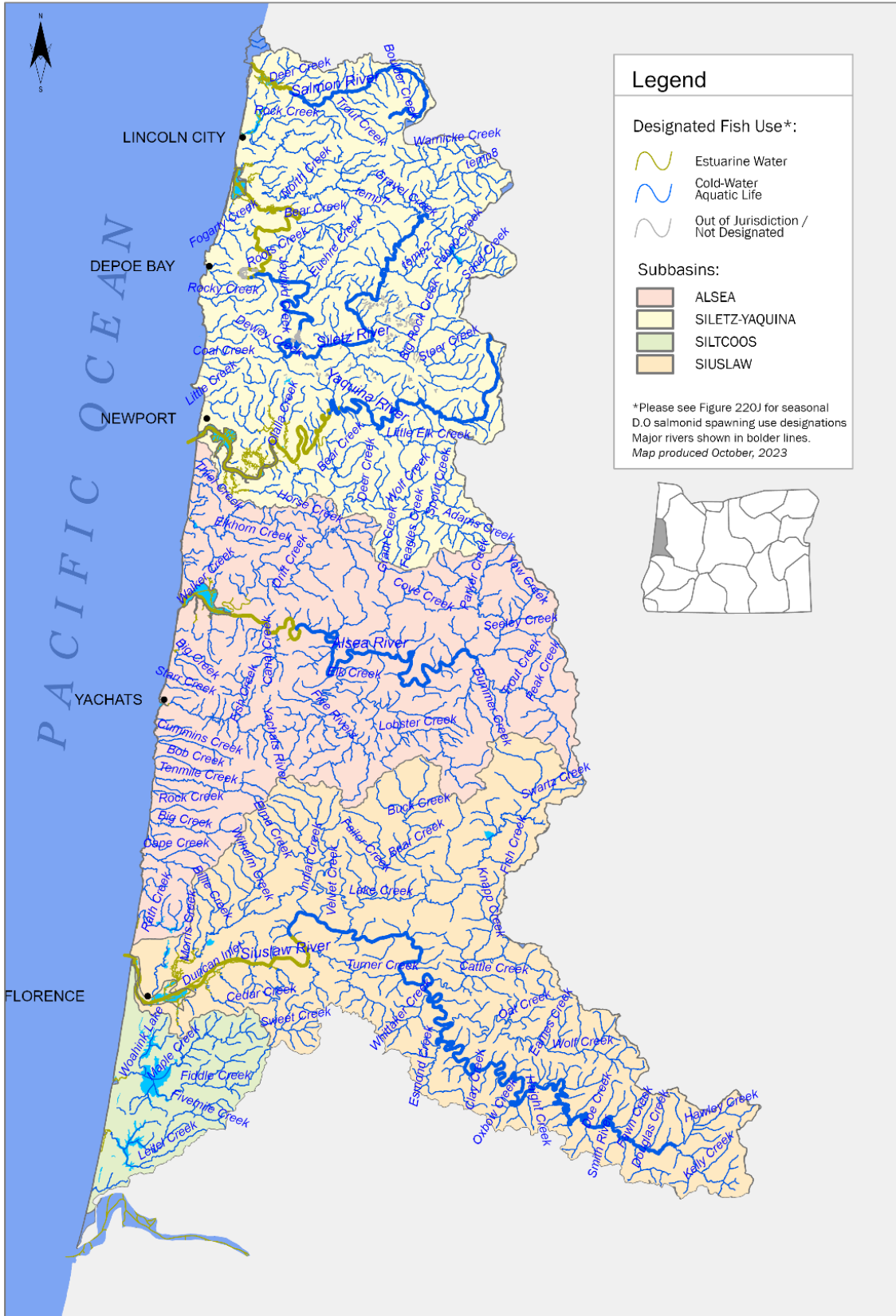




State of Oregon Department of Environmental Quality

OAR 340-041-0220 – Figure 220I

Year-Round Dissolved Oxygen Fish Use Designations Mid Coast Basin, Oregon





State of Oregon Department of Environmental Quality

OAR 340-041-0220 – Figure 220J

Seasonal Dissolved Oxygen Salmonid Spawning Use Designations Mid Coast Basin, Oregon

