

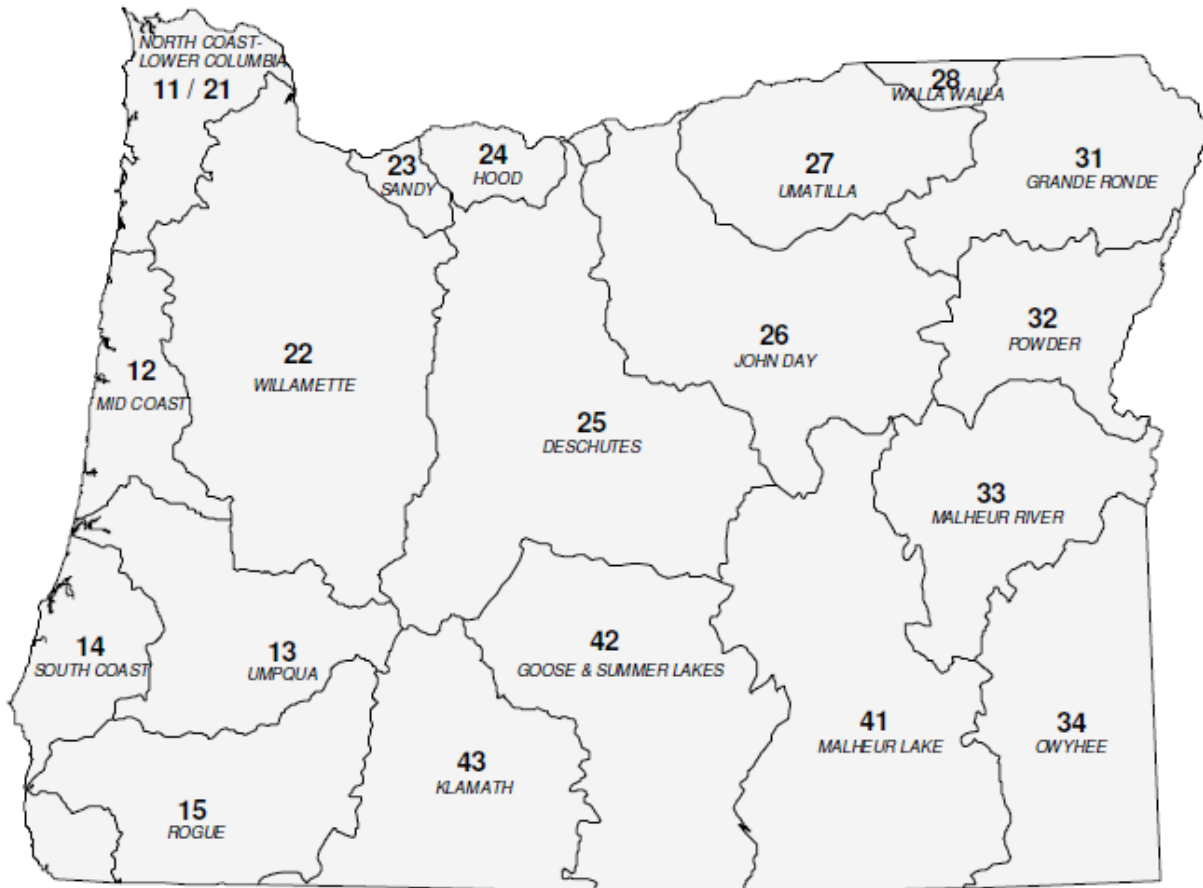


State of Oregon Department of Environmental Quality

OAR 340-041-0170

Tables and Figures

Figure 1: Oregon Basin Index Map



Basin Name	Basin #	OAR #
DESCHUTES	25	340-041-0130
GOOSE & SUMMER LKS	42	340-041-0140
GRANDE RONDE	31	340-041-0151
HOOD	24	340-041-0160
JOHN DAY	26	340-041-0170
KLAMATH	43	340-041-0180
MALHEUR LAKE	41	340-041-0190
MALHEUR RIVER	33	340-041-0201
MD COAST	12	340-041-0220
NORTH COAST-LWR COL	11-21	340-041-0230
OWYHEE	34	340-041-0250
POWDER	32	340-041-0260
ROGUE	15	340-041-0271
SANDY	23	340-041-0286
SOUTH COAST	14	340-041-0300
UMATILLA	27	340-041-0310
UMPQUA	13	340-041-0320
WALLA WALLA	28	340-041-0330
WILLAMETTE	22	340-041-0340



OAR 340-041-0170
Table 170A
Designated Beneficial Use
John Day Basin

Beneficial Uses	John Day River & All Tributaries
Public Domestic Water Supply ¹	X
Private Domestic Water Supply ¹	X
Industrial Water Supply	X
Irrigation	X
Livestock Watering	X
Fish & Aquatic Life ²	X
Wildlife & Hunting	X
Fishing	X
Boating	X
Water Contact Recreation	X
Aesthetic Quality	X
Hydro Power	
Commercial Navigation & Transportation	

¹ With adequate pretreatment (filtration & disinfection) and natural quality to meet drinking water standards.

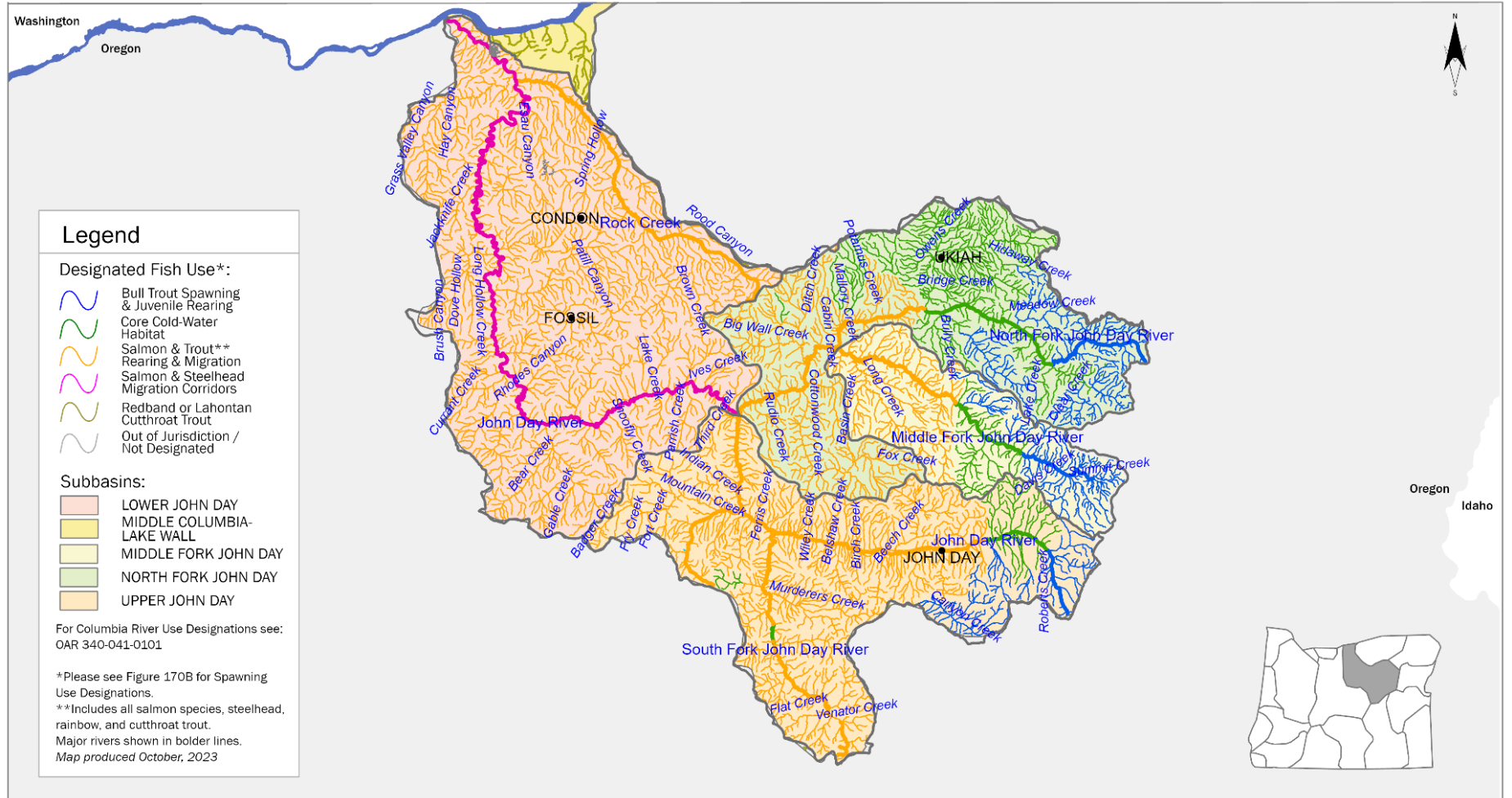
² See also Figures 170A, 170B, 170C and 170D for fish use designations for this basin.



State of Oregon Department of Environmental Quality

OAR 340-041-0170 – Figure 170A

Year-Round Temperature Fish Use Designations John Day Basin, Oregon

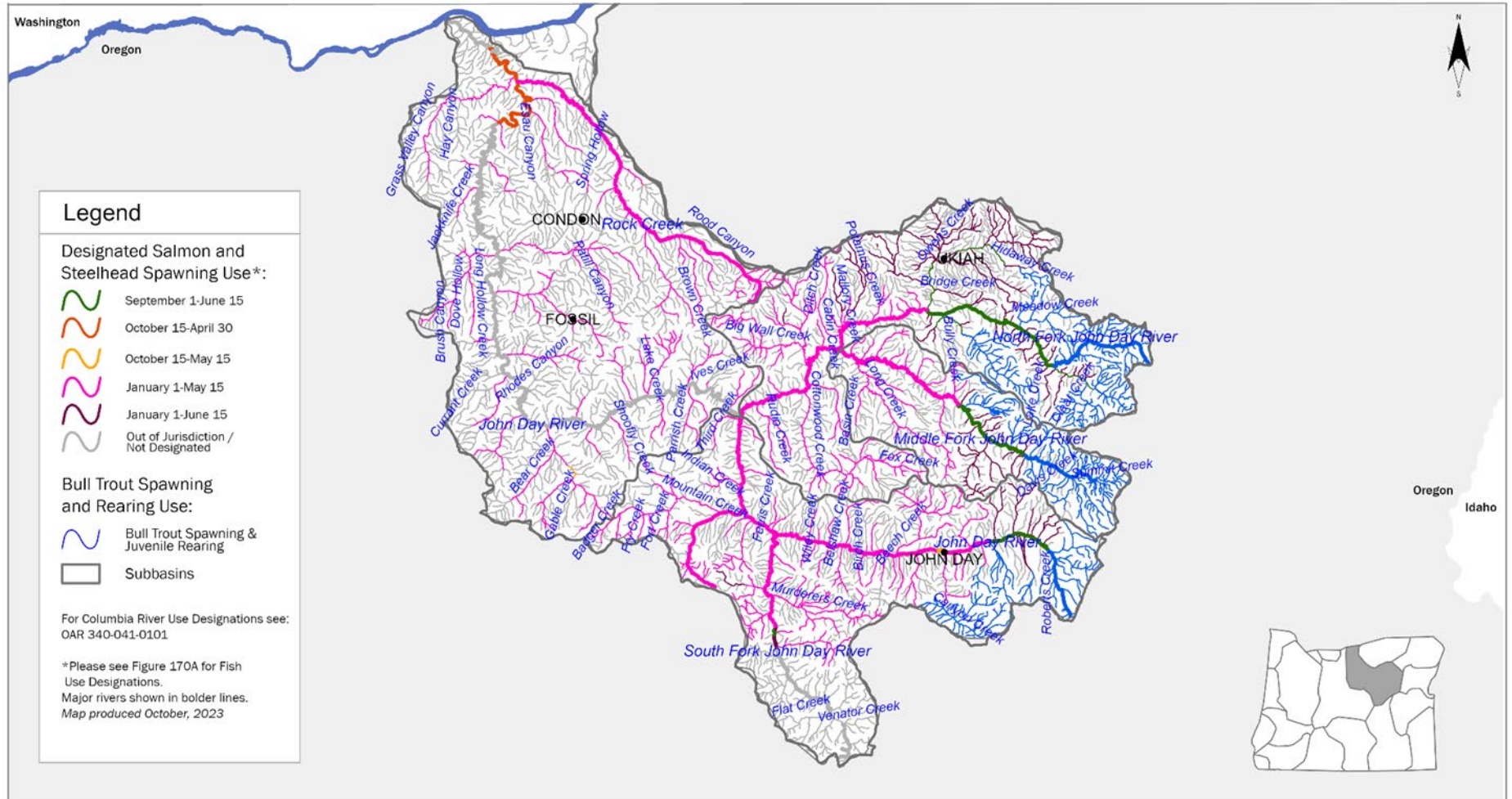




State of Oregon Department of Environmental Quality

OAR 340-041-0170 – Figure 170B

Seasonal Salmon and Steelhead Spawning Use Designations John Day Basin, Oregon



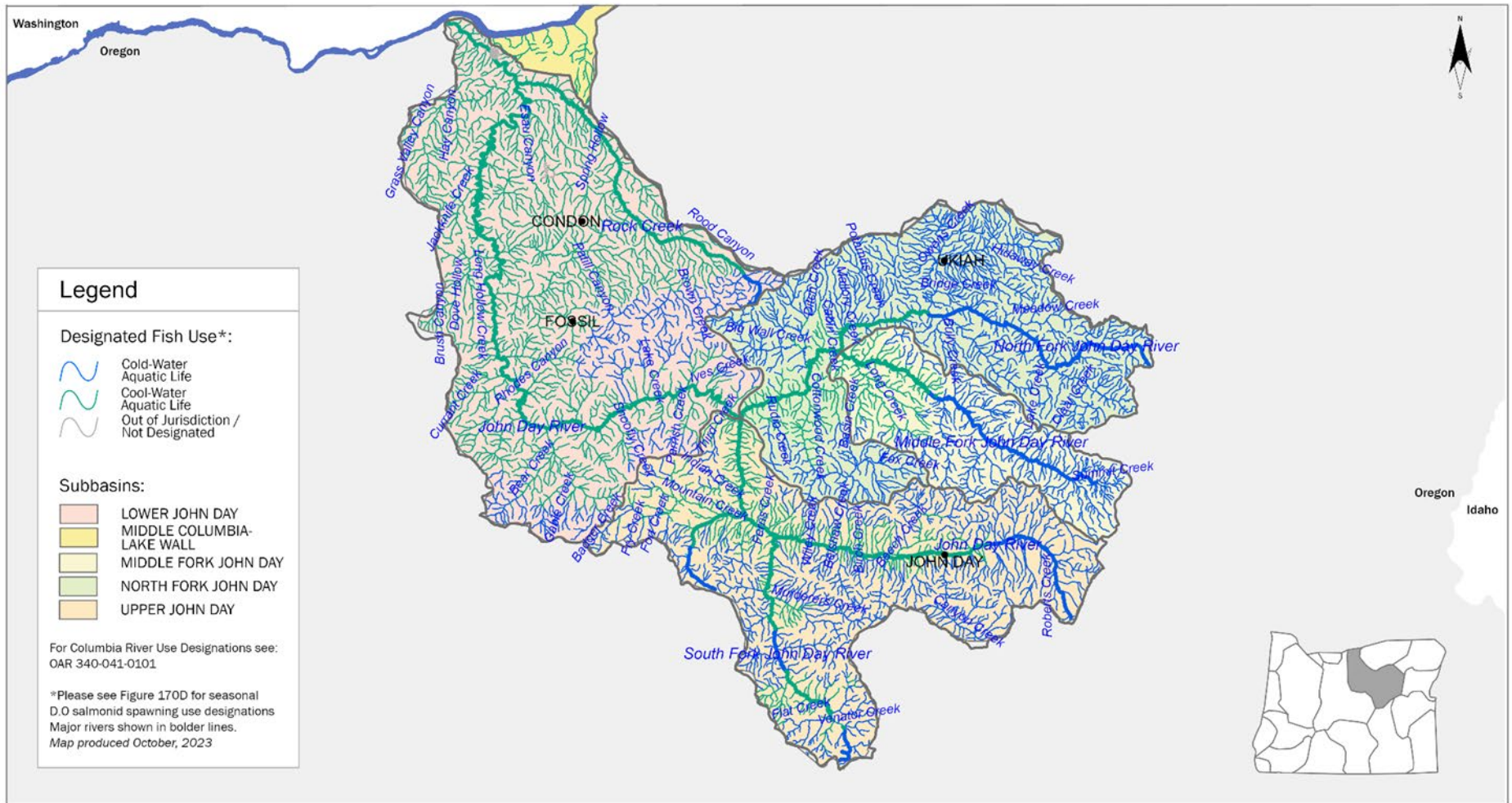


State of Oregon
Department of
Environmental
Quality

State of Oregon Department of Environmental Quality

OAR 340-041-0170 – Figure 170C

Year-Round Dissolved Oxygen Fish Use Designations John Day Basin, Oregon





State of Oregon Department of Environmental Quality

OAR 340-041-0170 – Figure 170D

Seasonal Dissolved Oxygen Salmonid Spawning Use Designations John Day Basin, Oregon

