

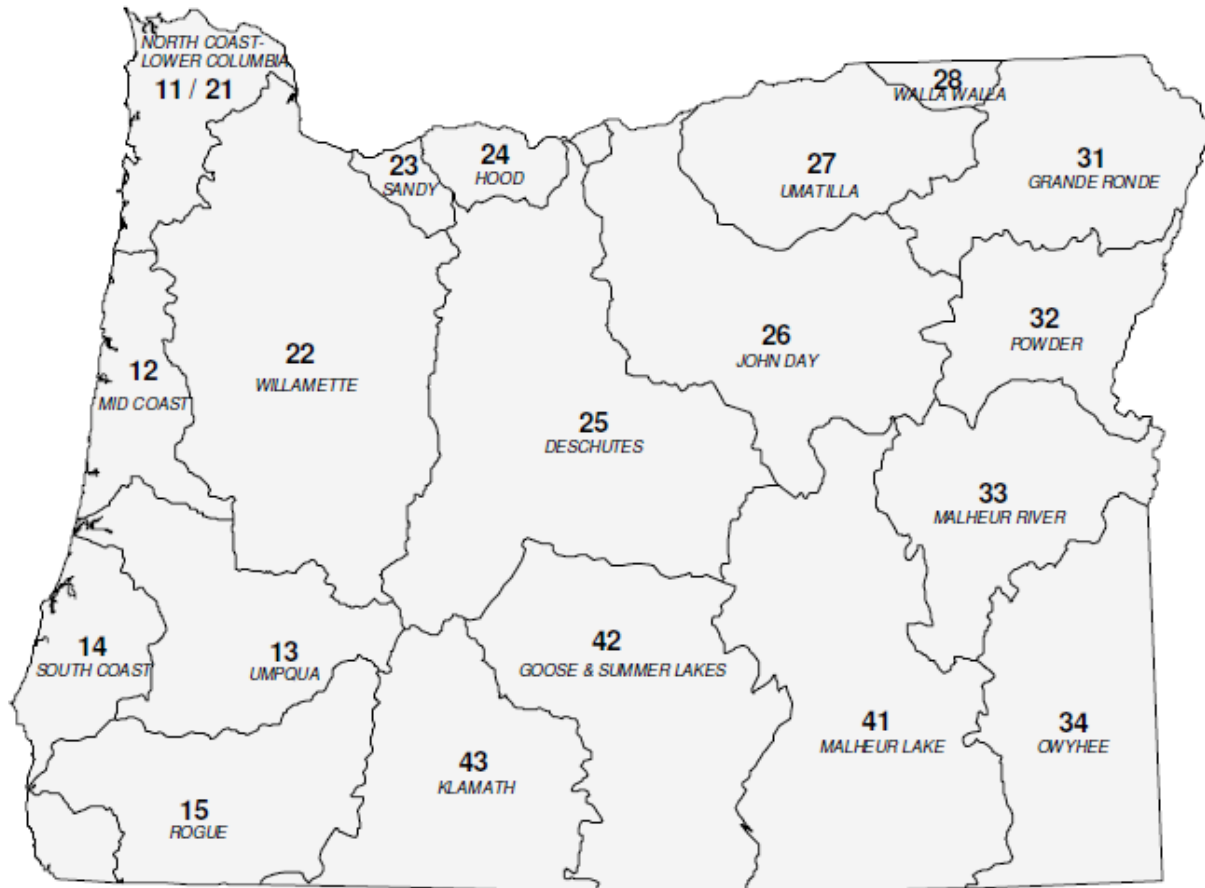


State of Oregon Department of Environmental Quality

**OAR 340-041-0130**

**Tables and Figures**

# Figure 1: Oregon Basin Index Map



Basin Name	Basin #	OAR #
DESCHUTES	25	340-041-0130
GOOSE & SUMMER LKS	42	340-041-0140
GRANDE RONDE	31	340-041-0151
HOOD	24	340-041-0160
JOHN DAY	26	340-041-0170
KLAMATH	43	340-041-0180
MALHEUR LAKE	41	340-041-0190
MALHEUR RIVER	33	340-041-0201
MD COAST	12	340-041-0220
NORTH COAST-LWR COL	11-21	340-041-0230
OWYHEE	34	340-041-0250
POWDER	32	340-041-0260
ROGUE	15	340-041-0271
SANDY	23	340-041-0286
SOUTH COAST	14	340-041-0300
UMATILLA	27	340-041-0310
UMPQUA	13	340-041-0320
WALLA WALLA	28	340-041-0330
WILLAMETTE	22	340-041-0340



**OAR 340-041-0130**  
**Table 130A**  
**Designated Beneficial Uses**  
**Deschutes Basin**

Beneficial Uses	Deschutes River Main Stem from Mouth to Pelton Regulating Dam	Deschutes River Main Stem from Pelton Regulating Dam to Bend Diversion Dam and for the Crooked River Main Stem	Deschutes River Main Stem above Bend Diversion Dam & for the Metolious River Main Stem	All Other Basin Stems
Public Domestic Water Supply <sup>1</sup>	X	X	X	X
Private Domestic Water Supply <sup>1</sup>	X	X	X	X
Industrial Water Supply	X	X	X	X
Irrigation	X	X	X	X
Livestock Watering	X	X	X	X
Fish & Aquatic Life <sup>2</sup>	X	X	X	X
Wildlife & Hunting	X	X	X	X
Fishing	X	X	X	X
Boating	X	X	X	X
Water Contact Recreation	X	X	X	X
Aesthetic Quality	X	X	X	X
Hydro Power		X		
Commercial Navigation & Transportation				

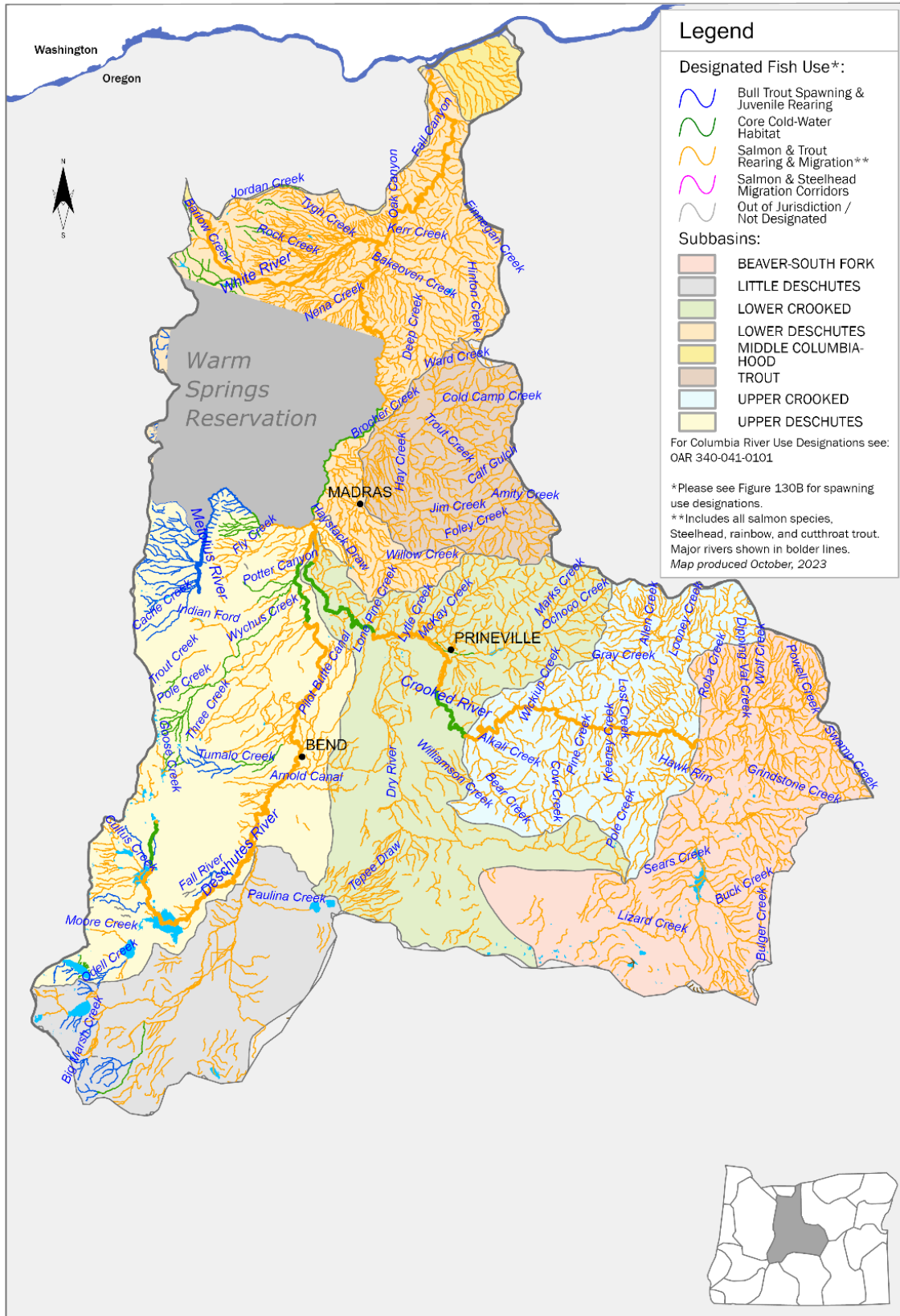
<sup>1</sup> With adequate pretreatment (filtration and disinfection) and natural quality that meets drinking water standards.

<sup>2</sup> See also Figures 130A, 130B, 130C and 130D for fish use designations for this river.



# OAR 340-041-0130 – Figure 130A

## Year-Round Temperature Fish Use Designations Deschutes Basin, Oregon

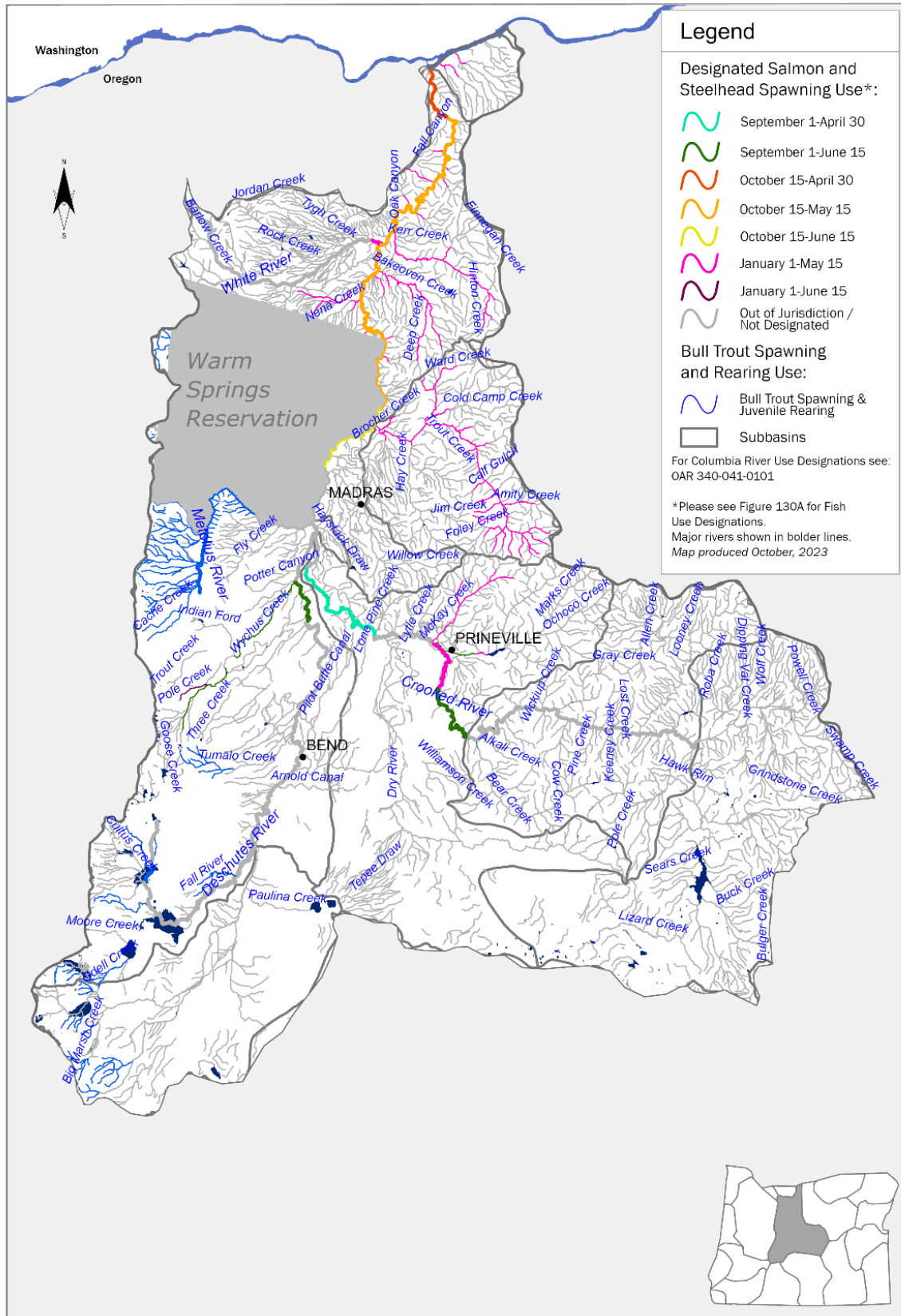




State of Oregon Department of Environmental Quality

# OAR 340-041-0130 – Figure 130B

## Seasonal Salmon and Steelhead Spawning Use Designations Deschutes Basin, Oregon



### Legend

#### Designated Salmon and Steelhead Spawning Use\*:

- September 1-April 30
- September 1-June 15
- October 15-April 30
- October 15-May 15
- October 15-June 15
- January 1-May 15
- January 1-June 15
- Out of Jurisdiction / Not Designated

#### Bull Trout Spawning and Rearing Use:

- Bull Trout Spawning & Juvenile Rearing
- Subbasins

For Columbia River Use Designations see: OAR 340-041-0101

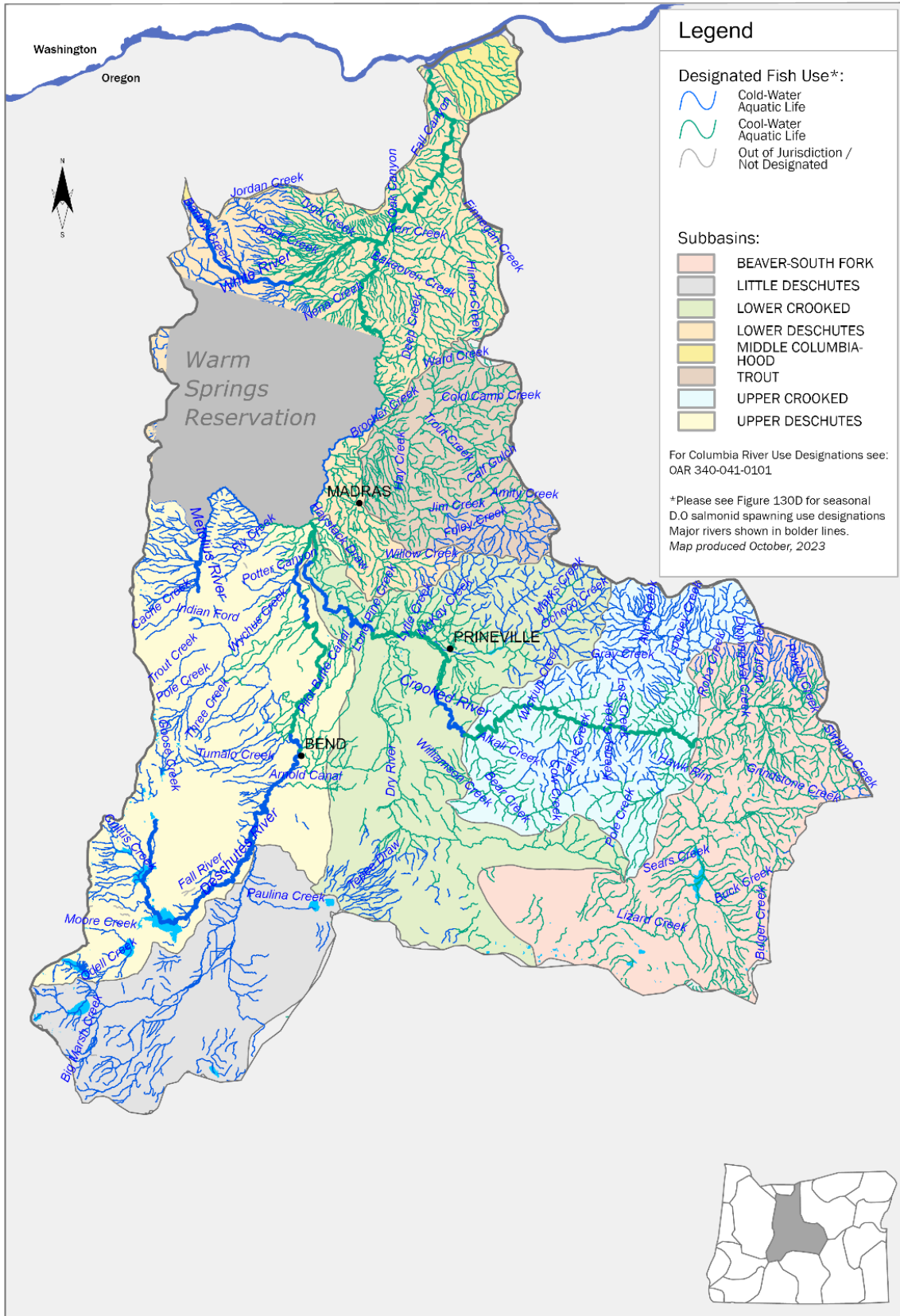
\*Please see Figure 130A for Fish Use Designations.  
Major rivers shown in bolder lines.  
Map produced October, 2023



State of Oregon Department of Environmental Quality

# OAR 340-041-0130 – Figure 130C

## Year-Round Dissolved Oxygen Fish Use Designations Deschutes Basin, Oregon





# OAR 340-041-0130 – Figure 130D

## Seasonal Dissolved Oxygen Salmonid Spawning Use Designations Deschutes Basin, Oregon

