

ARKANSAS GAME AND FISH COMMISSION
LITTLE ROCK, ARKANSAS

77-047

COMMISSION ORDER NUMBER 006-77

Minutes of: August 16, 1977

Location: Lakeview, Arkansas

Effective: September 2, 1977

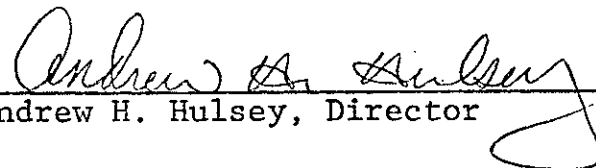
Subject: Acting Director

O R D E R

During the absence of Director Andrew H. Hulsey, William H. Donham is appointed acting director from September 2, 1977, to and including September 26, 1977, with all appropriate powers and duties as such, including but not limited to the authority to execute federal assistance documents.

AUTHENTICATION

Andrew H. Hulsey, Director of the Arkansas State Game and Fish Commission hereby certifies that the foregoing order was adopted by the Arkansas State Game and Fish Commission on the 16th day of August, 1977, at its regular monthly meeting at Lakeview, Arkansas, and that the same entered and spread upon the minutes of the said meeting and kept in the regular course of business as a record thereof in my office in Little Rock, Arkansas.

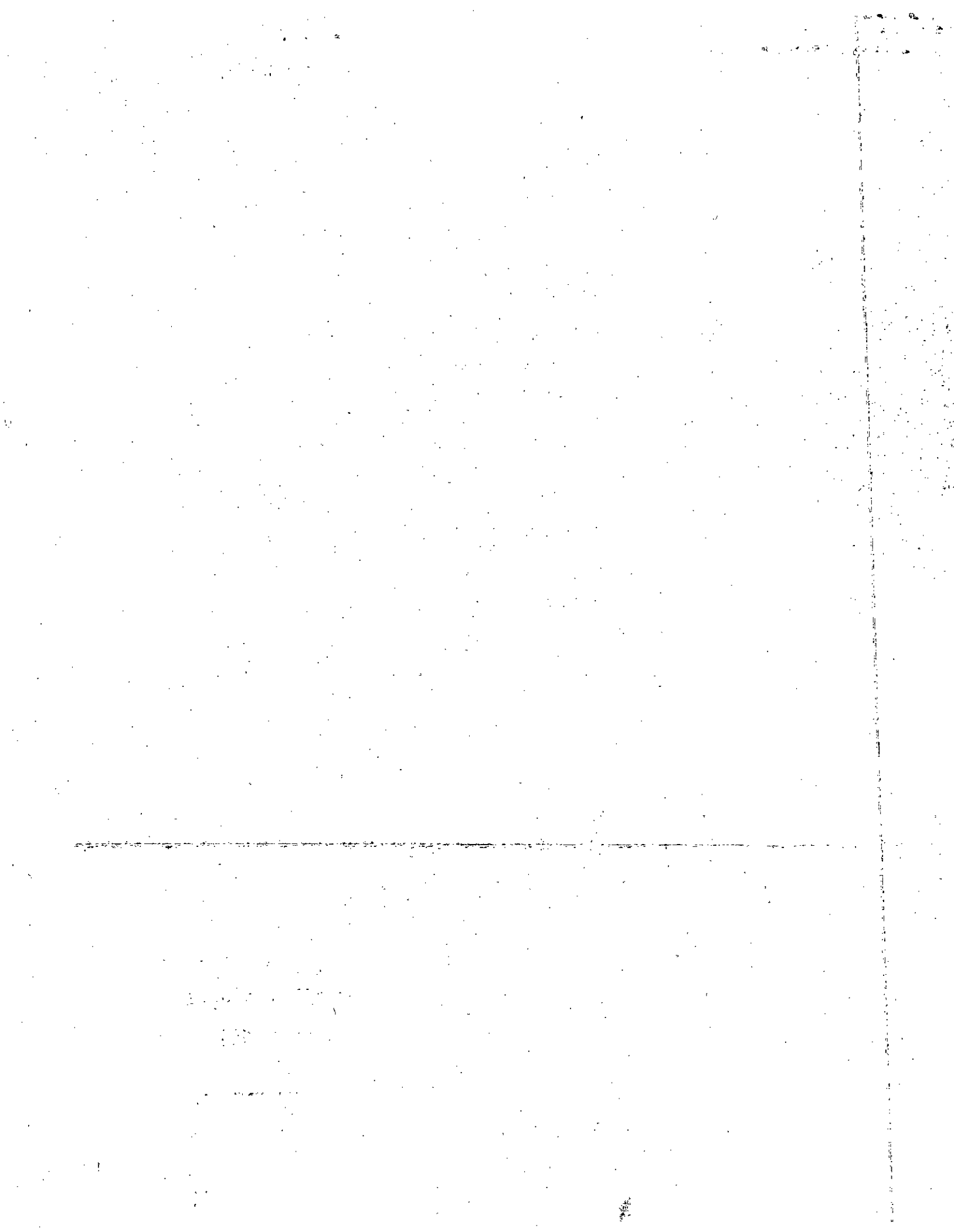

Andrew H. Hulsey, Director

RECEIVED

SECRETARY OF STATE

SEP 1 1977

By _____



ARKANSAS GAME AND FISH COMMISSION
LITTLE ROCK, ARKANSAS

Minutes of: August 15-16, 1977

Effective: September 6, 1977

77-048

COMMISSION ORDER NUMBER 007-77

Location: MILLWOOD RESERVOIR AND

MERCER BAYOU
Subject: COMMERCIAL FISHING

O R D E R

It shall be unlawful to fish Millwood Reservoir, including the Cossatot and Saline Rivers up to State Highway 24, Little River to the Oklahoma State Line, and Mercer Bayou: EXCEPT from September 6, 1977 until April 30, 1978. Only three (3) inch or larger square bar mesh trammel and gill nets and other commercial tackle as declared legal by the Arkansas Game and Fish Commission may be used. The bodies of water as mentioned above will be open to commercial fishing during regular commercial fishing season after the expiration of the dates as mentioned above.

CERTIFICATE

I CERTIFY that the foregoing is a true and correct copy of an order adopted by the Arkansas State Game and Fish Commission met in regular session on August 15-16, 1977 at Lakeview, Arkansas and kept as a record thereof in my office at the Game and Fish Building, State Capitol Mall, Little Rock, Arkansas 72201.

Andrew H. Hulsey
Andrew H. Hulsey, Director

State of Arkansas)
) ss
County of Pulaski)

Subscribed and sworn to before me on Aug. 22, 1977

Billie G. Shrader
NOTARY PUBLIC

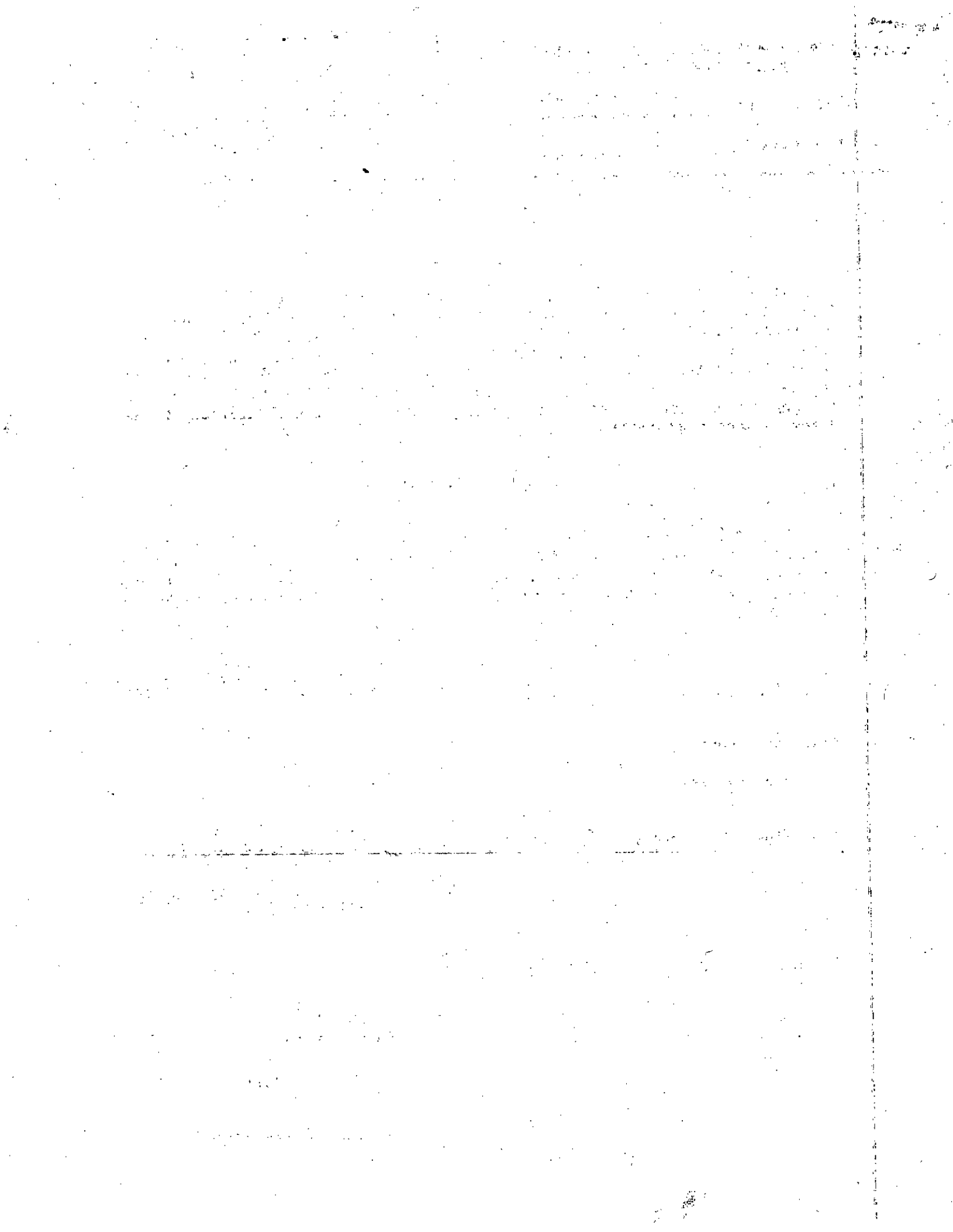
My Commission Expires: 1-22-81

RECEIVED

SECRETARY OF STATE

SEP 1 1977

By _____



ARKANSAS GAME AND FISH COMMISSION
LITTLE ROCK, ARKANSAS

Minutes of: August 15-16, 1977

Effective: January 1, 1978

77-049

COMMISSION ORDER NUMBER 008-77

Location: STATEWIDE

Subject: WATERS CLOSED TO
COMMERCIAL FISHING

O R D E R

Amends Commission Code Book Number 140.00.

WATERS CLOSED TO COMMERCIAL FISHING. No commercial fishing is permitted in the following counties or parts of counties: Baxter; Benton; Boone; Carroll; Clark, west of Highway 67 from Arkadelphia south of county line and west of Highway 7 from Arkadelphia north to county line; Cleburne; Conway, north of Interstate 40, except Cadron Creek and the part of the north Cadron Creek in Conway County, and Point Remove Creek up the east fork to Highway 95 and the Kissire Bridge on the west fork; Crawford, north of Interstate 40; Faulkner, north of Interstate 40 and Highway 64 except that part of the north Cadron Creek in Faulkner County below Highway 285 and the Cadron Creek in Faulkner County; Franklin, north of the Missouri Pacific Railroad and east of Highway 23, and that part north of Interstate 40 and west of Highway 23; Fulton, west of Highway 63; Garland, west of Highway 7; Hempstead, north of Highway 24; Hot Spring, west of Highway 7; Howard, north of Highway 24; Independence, west of Highway 167; Izard; Johnson, north of the southern route of the Missouri Pacific Railroad EXCEPT Dardanelle Lake; Logan, south of Highway 10; Madison; Marion; Montgomery; Nevada, north of Highway 24 and west of Highway 67; Newton; Perry, west of Highway 7; Pike; Polk; Pope, north of Interstate 40 and east of Highway 7, and north of the Missouri Pacific Railroad and west of Highway 7 EXCEPT Dardanelle Lake; Scott; Searcy; Sebastian, south of Highway 10; Sevier, north of Highway 24; Sharp, west of Highway 167 and Highway 62; Stone; Van Buren; Washington; White, north of Highway 64 and west of Highway 167; Yell, west of Highway 7 and south of Highway 10. In addition no commercial fishing is permitted in any of the following waters: All waters upstream from 100 yards below Rempel Dam on the Ouachita River (This includes Lakes Catherine and Hamilton); Lake Erling including all tributaries upstream from 100 yards below the Lake Erling Dam to Arkansas State Highway 82; All lakes owned and/or operated by the State Parks, Recreation and Travel Commission, the U. S. Forest Service, the Arkansas Game and Fish Commission (excluding Grand Lake, all of Lake Chicot, and all natural or channel scar lakes on Commission wildlife management areas); Lake Wallace in Drew and Chicot Counties; Lake Maumelle in Pulaski County, and all lakes in the Hot Springs Village area of Garland and Saline Counties. The preceding named waters shall remain closed to all commercial fishing until changed by Order of the Arkansas Game and Fish Commission. IF ANY of these waters are temporarily opened to commercial fishing they shall return to a closed condition at the end of the specified open period.

PANALTY: \$50.00 to \$500.00.

RECEIVED
SECRETARY OF STATE

SEP 1 1977

By _____

CERTIFICATE

I CERTIFY that the foregoing is a true and correct copy of an order adopted by the Arkansas State Game and Fish Commission met in regular session on August 15-16, 1977 at Lakeview, Arkansas and kept as a record thereof in my office at the Game and Fish Building, State Capitol Mall, Little Rock, Arkansas 72201.

Andrew H. Hulsey
Andrew H. Hulsey, Director

State of Arkansas)
) ss
County of Pulaski)

Subscribed and sworn to before me on August 23, 1977

Billie G. Sprader
NOTARY PUBLIC

My Commission Expires: 1-22-81

ARKANSAS GAME AND FISH COMMISSION
LITTLE ROCK, ARKANSAS

Minutes of: August 15-16, 1977

Effective: January 1, 1978

77-050
COMMISSION ORDER NUMBER 009-77

Location: COMMISSION OWNED LAKES

Subject: SIZE MOTOR RESTRICTION

O R D E R

Amends Commission Code Book Number 71.05.

COMMISSION LAKE REGULATIONS.

RECEIVED
SECRETARY OF STATE

SEP 1 1977

1. The use of any motor in excess of 10 horsepower is prohibited. (EXCEPTIONS: Party Barges may use up to and including 25 horsepower and authorized commercial boat docks will be required to have an emergency boat with sufficient horsepower to answer any emergency that might arise, regardless of lake conditions.) The 10 horsepower restriction shall not apply to Upper Lake Chicot, Grand Lake, Calion Lake and the zoned portions of Lake Hinkle, Lake Enterprise, Upper and Lower White Oak Lakes, Lakes Wilson, Wallace and Grampus, and all natural or channel scar lakes on Commission wildlife management areas, except where signs are posted prohibiting larger motors.
2. Catamaran or "Party Barge" shall not exceed 8 feet by 22 feet in size.
3. Boat Houses (not to include sleeping or toilet facilities or living quarters) for private riparian landowners and/or cabin owners, may be constructed if written permission has been granted by the Arkansas Game and Fish Commission.
4. Such structure shall not exceed 24 feet in length and 14 feet in width, nor shall it have a walkway longer than six feet from shoreline to boat house construction.
5. If two (2) riparian landowners and/or cabin owners desire to build a joint boat house, such structure shall not exceed 24 feet in length and 24 feet in width, and walkway from shoreline to boat house shall not exceed 6 feet in length, and no other boat house will be permitted a riparian land and/or cabin owner when having joint ownership in such a dual boat house as described herein.
6. Boat docks or piers (platform type) (not to include living quarters) for private riparian landowners and/or cabin owners may be constructed if written permission has been granted by the Arkansas Game and Fish Commission, said dock or pier shall not exceed 6 feet by 100 feet. EXCEPTIONS: A "T" may be constructed on the end of the dock or pier but shall not exceed 8 feet by 16 feet; and may not infringe on an imaginary line of any adjacent landowner. The overall length of the dock or pier, including "T", must not exceed 100 feet. Boat docks or piers must be open to the public and cannot be for the exclusive use of the landowner.
7. All structures must be approved as to the design, dimensions and materials by the Arkansas Game and Fish Commission, and shall be permanently fixed adjacent to the owners' lot or land.
8. Boat docks, piers or houses must display the Arkansas Game and Fish Commission permit number. Permit numbers must be a minimum of three inches in height and placed on the side of the structure facing the center of the lake. Permits are not transferable. In the event the adjacent land and approved structure is sold, the buyer must procure from the Arkansas Game and Fish Commission an additional permit in his name.

(Over)

